

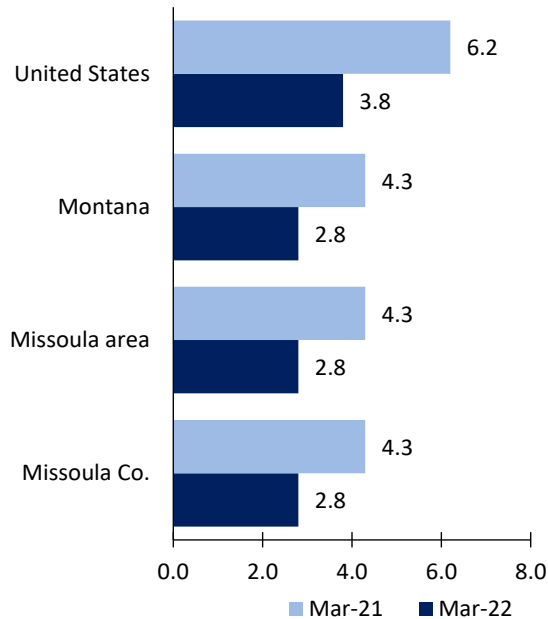
# Missoula Area Economic Summary

Updated May 03, 2022

This summary presents a sampling of economic information for the area; supplemental data are provided for regions and the nation. Subjects include **unemployment, employment, wages, prices, spending, and benefits**. All data are not seasonally adjusted and some may be subject to revision. Area definitions may differ by subject. For more area summaries and geographic definitions, see [www.bls.gov/regions/economic-summaries.htm](http://www.bls.gov/regions/economic-summaries.htm).

## Unemployment rates for the nation and selected areas

### Unemployment rates



Source: U.S. BLS, Local Area Unemployment Statistics.

## Average weekly wages for all industries by county

Missoula area, third quarter 2021

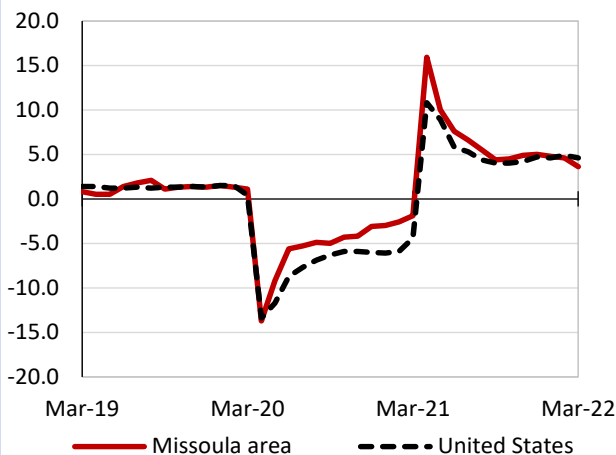
(U.S. = \$1,251; Area = \$958)



Source: U.S. BLS, Quarterly Census of Employment and Wages.

## Over-the-year changes in employment on nonfarm payrolls and employment by major industry sector

### 12-month percent changes in employment



Source: U.S. BLS, Current Employment Statistics.

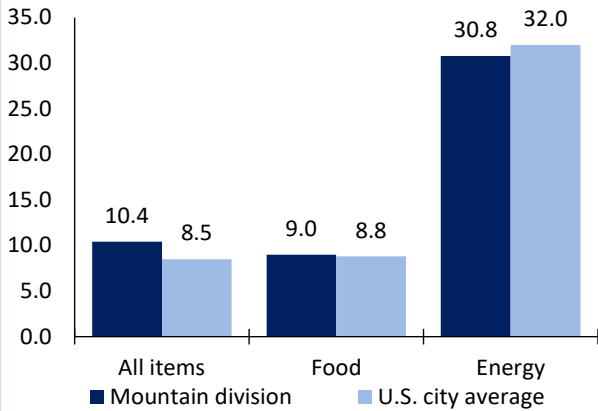
Missoula area employment (number in thousands)	Mar. 2022	Change from Mar. 2021 to Mar. 2022	
		Number	Percent
Total nonfarm	63.7	2.2	3.6
Mining, logging, and construction	-	-	-
Manufacturing	-	-	-
Trade, transportation, and utilities	13.2	0.7	5.6
Information	-	-	-
Financial activities	-	-	-
Professional and business services	7.2	0.1	1.4
Education and health services	11.0	0.1	0.9
Leisure and hospitality	7.3	0.2	2.8
Other services	-	-	-
Government	11.0	-0.1	-0.9

Source: U.S. BLS, Current Employment Statistics.



Over-the-year change in the prices paid by urban consumers for selected categories

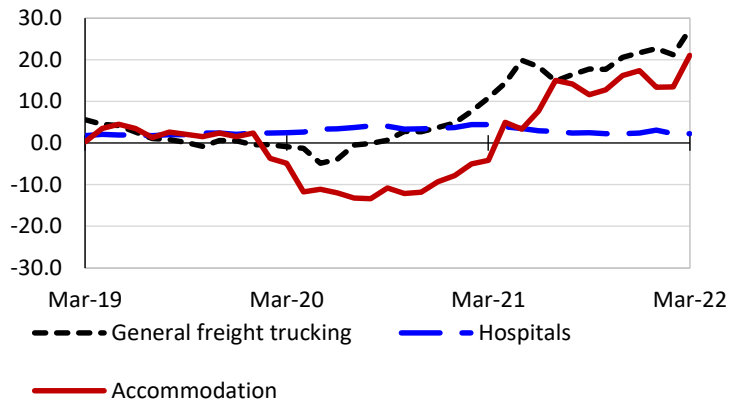
12-month percent change in CPI-U, March 2022



Source: U.S. BLS, Consumer Price Index.

Over-the-year changes in the selling prices received by producers for selected industries nationwide

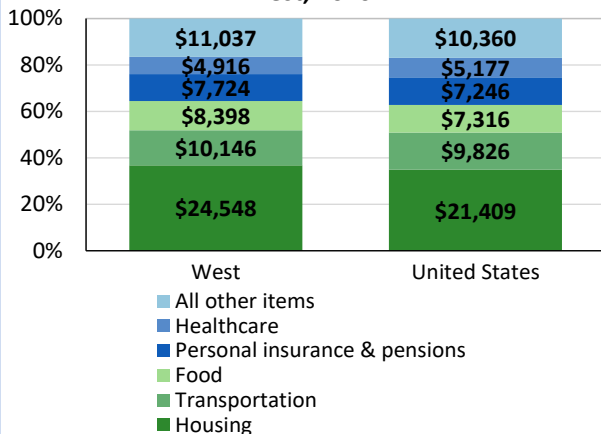
12-month percent changes in PPI



Source: U.S. BLS, Producer Price Index.

Average annual spending and percent distribution for selected categories

Average annual expenditures, United States and West, 2020



Source: U.S. BLS, Consumer Expenditure Survey.

Average hourly wages for selected occupations

Occupation	Missoula area	United States
All occupations	\$23.06	\$28.01
Pharmacists	54.97	60.43
Medical and health services managers	44.30	57.61
Accountants and auditors	36.15	40.37
Computer user support specialists	21.86	27.72
Forest and conservation technicians	20.17	20.87
Retail salespersons	14.68	15.35

Source: U.S. BLS, Occupational Employment and Wage Statistics, May 2021.

Employer costs per hour worked for wages and selected employee benefits by geographic division

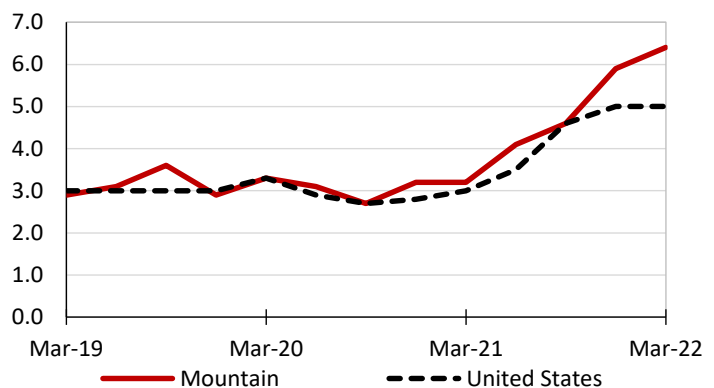
Private industry, December 2021	Mountain (1)	United States
Total compensation	\$34.98	\$38.07
Wages and salaries	24.71	26.86
Total benefits	10.26	11.22
Paid leave	2.47	2.85
Vacation	1.27	1.46
Supplemental pay	1.20	1.32
Insurance	2.80	2.87
Retirement and savings	1.15	1.32
Legally required benefits	2.64	2.86

(1) The states that compose the Mountain census division are: AZ, CO, ID, MT, NV, NM, UT, and WY.

Source: U.S. BLS, Employer Costs for Employee Compensation.

Over-the-year changes in wages and salaries

12-month percent changes in ECI



Source: U.S. BLS, Employment Cost Index.

