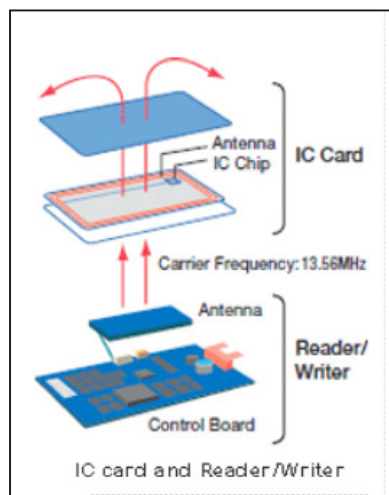


NFC – Near Field Communication



Gregor Hohpe

Core Technology



- Passive card powered by radio field
- 212kbps, 100ms read/write cycle
- Authentication, data integrity protection
- 4-36KB card size
- Public and private data blocks
- Sony Felica and Mifare
- ISO 14443

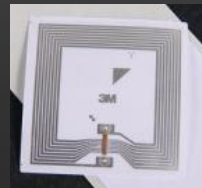
NFC

- Short Range (2-5cm)
- 1:1
- Read / write
- Large Capacity
- Secure
- A few Dollars

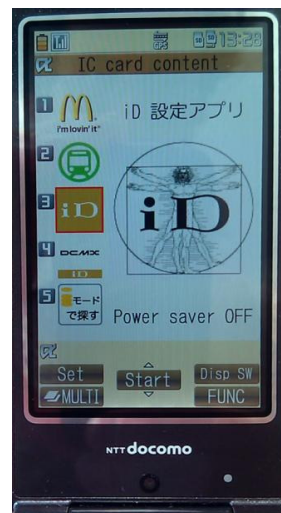
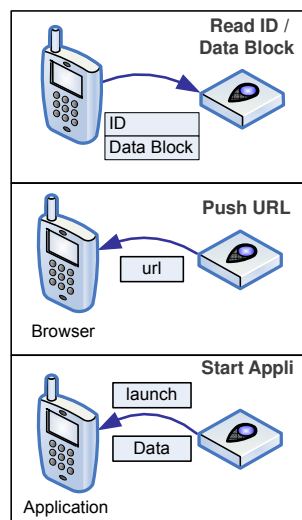


RFID


- Longer range (meters)
- Many to one
- Mostly read
- Relatively dumb
- Not necessarily
- Extreme low-cost



Mobile FeliCa



Standards and Vendors

- Physical Layer, Link Layer: ISO 14443
 - Phillips Mifare (ISO 14443 Type A)
 - Sony Felica (~ISO 14443 Type C)
- FeliCa Networks = “Mobile Felica” 
 - NTT / JR / Sony joint.
 - Integration with mobile phone.
- NFC Forum (<http://www.nfc-forum.org>)
 - Tag Type specifications
 - Record Type specifications
- JSR 257: Contactless Communication API

Physical Touch Points

	QR Code	Felica Lite	URL Push	Just Touch
Capability	Send Static URL	Send Static URL Send Image	Read ID Send Dynamic URL	Read ID Read / Write Data
Base Station Requirement	Minimal	Minimal	Power (solar / battery)	Network connectivity
User Experience	Not Great <ul style="list-style-type: none"> • 10 secs + open page • User needs to initiate • Multiple menu levels • Very bad in low light 	Not Great <ul style="list-style-type: none"> • 10 secs + open page • User needs to install app and initiate • Could be much better with SmartPhone 	Good <ul style="list-style-type: none"> • 1 sec + open page • No user action • Robust 	Great <ul style="list-style-type: none"> • < 0.5 sec • No button pushes • Works with card & phone • Requires Registration
Cost per station	<\$1	\$1	~\$30	~\$80 + connectivity fee



Stages of Adoption

2001	2005	2010
<p>Phase 1</p> <ul style="list-style-type: none"> • Initial killer app (transport) • Technology adoption 	<p>Phase 2</p> <ul style="list-style-type: none"> • Broad deployment • Payment • Mobile Felica 	<p>Phase 3</p> <ul style="list-style-type: none"> • Platform • Social • Points • Games

Local Search - NaviTouch

- At Station Exit
- Restaurants
 - Retail
 - Hotels
 - Attractions

Local Search – Roppongi Retail Association >



- 92 Lamp posts in Roppongi equipped with Felica
- Lamp post typically owned / operated by retail association
- Includes local search, basic navigation, open now

Local Search – Roppongi Retail Association

しました！

ROPPONGI

～あなたがタッチした街路灯はこちら～

アビビル 14
誠志堂ビル
六本木
六本木駅前

Town Search

- 六本木のアート
- 六本木パブリックアート作品

- 飲食店
☆今やっているお店をさがす☆
[和食](#) | [洋食](#) | [アジア](#) | [各国料理](#) | [喫茶・カフェ](#) | [ファーストフード](#) | [バー・スナック](#) | [その他](#)
 - ショッピング
[食料品](#) | [衣料品・生地](#) | [生活・家電・雑貨](#) | [宝石・貴金属](#) | [生花・グリーン](#) | [薬局](#) | [スーパー・コンビニ](#) | [古美術・古画](#) | [その他](#)
 - サービス
[不動産関連](#) | [生活サービス](#) | [趣味・カルチャー・レジャー](#) | [金融](#) | [その他](#)
 - 病院・施設
[病院](#) | [動物病院](#) | [ホテル](#) | [施設](#) | [その他](#)
 - その他
[演劇興行](#) | [その他](#)
- News Release
- 2010/08/03
[システムメンテナンスに伴うサービス停止について](#)
 - 2010/03/15

Payment: 370k Shops + 400k Vending Machines

決済方式		プリペイド(前払い) (Prepaid)					
利用環境	Phys.	166,000店	79,420店	62,000店	27,578店	40,500店	自販機:40万台
	Online	約7,500サイト (09/03)	3サイト			1サイト	
決済ブランド		Edy カード: 5,300万枚 (携帯: 1000万台) (09/10) ヒットワレット	Suica カード: 3,040万枚 (マネー: 万枚) (携帯: 177万台) (09/11) JR東日本	PASMO カード: 1,364万枚 (09/10) パスモ	nanaco カード: 923万枚 (09/10) セブン&i	AEON カード: 1,220万枚 (09/11) イオン	TIOJ (JCB) カード: 934万枚 (09/08)
		FeliCa					TypeA
決済方式		ポストペイ(後払い) (Post-Pay)					
利用環境	Phys.	R/W: 390,000台	R/W: 169,000台	R/W: 49,000台	18,000店	R/W: 276台	
	Online						約2,000サイト
決済ブランド		iD 会員: 1000万人 (08/12) NTTドコモ	QUICPAY 会員: 455万人 (08/12) JCB	Smart plus VISA TOUCH 会員: 69万人 (08/9) UFJニコス/ VISA	PiTaPa 会員: 116万人 (09/5) スルッとKANSAI	PayPass™ 会員: 97,000人 Master Card	ELIO 会員: 100万人 (07/3) SFI
		FeliCa			Type A or B	FeliCa	

Payments



Points / Coupons: Gurunavi Touch >



- 10000 Devices, stand-alone
- 1200 in Tokyo, 19 in Roppongi >
- Store owner gains insight
- Lottery game
- Stamp Card
- Loyalty: "free beer after 3 visits"



Campaigns

Collect Avatar items

Point / Coupons w/ POS Integration

McDonalds >



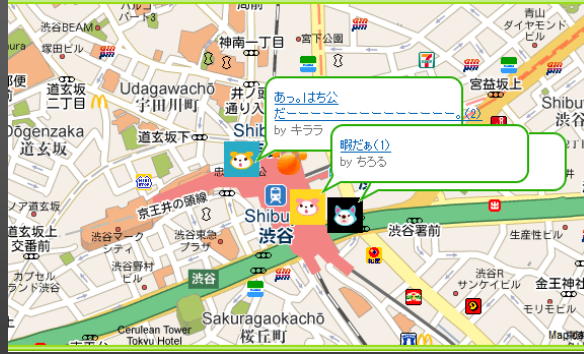
- Download application to phone
- Select coupon
- Coupon stored in Mobile Felica chip
- Redeem via NFC at register

Games / Loyalty

“Stamp Rally”



Shima Ken >



- JR / SUICA



- Reads SUICA/Edy purchase history to obtain a place as “territory”
- Think “Foursquare” based on spend

Advertising / Media Bridging



Platform / Systems – B.U.G. >

- Devices and solutions
- Connected or stand-alone devices
- Battery or AC power
- Manufactured 150k – 200k devices



Do This at Home – Hardware is Hot!

- 32KB Flash, 2 KB RAM, 1KB EEPROM **\$2**
- Internal / external clock, up to 20 MIPS
- Counters, A/D converters, Parallel & Serial I/O, PWM, BOD
- Libraries, GCC targets **\$0**
- Programming and debug tools
- Turning hardware problems into software problems **Priceless**

Embedded Environments

\$25 • Arduino

- Based on ATMel AVR328 – 32KB, 20 MHz
- IDE w/ C-like language, USB bootloader, debugger
- Good collection of “shields”, e.g. USB, Ethernet



\$1 • AVR Bare Bones

- Cheap (\$1-\$2), open source tool chain
- Requires programmer (can build using AVR)

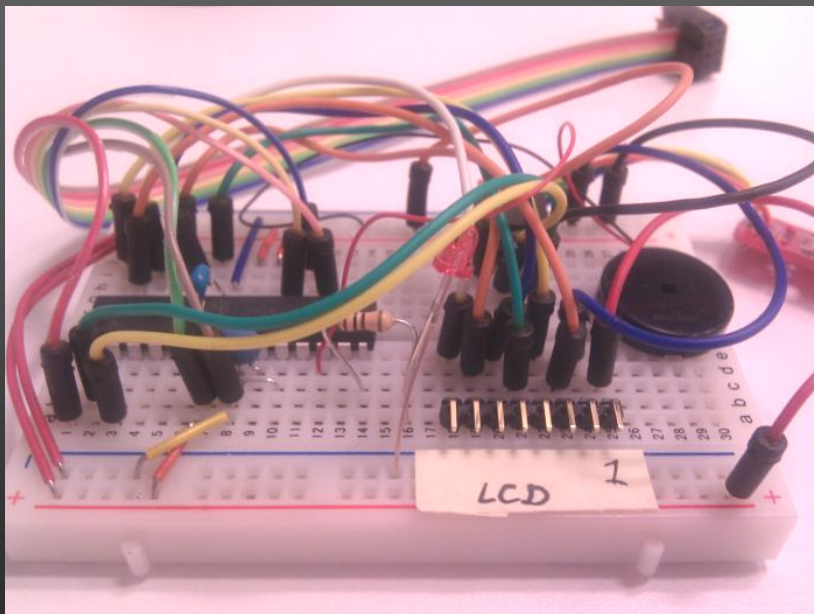


\$60 • mbed

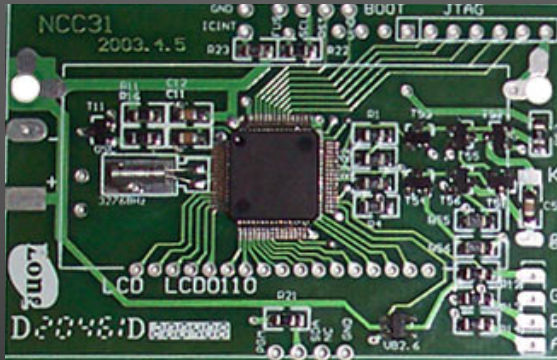
- Cortex-M3 running @ 94MHz, 512KB
- Cloud-based compiler



No Solder Solution



Making Printed Circuit Boards

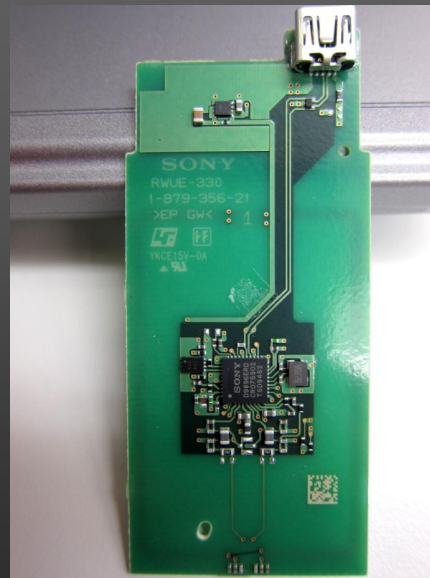


- Sparkfun BatchPCB
\$20 + \$2.50 / sq. in.
- 4pcb.com
\$33/each (1+)
- P-ban (Japan)
50 boards \$270

1. Design schematic with EAGLE
2. Create board layout from schematic
3. Export as Gerber files
4. Upload to manufacturer <http://www.ladyada.net/library/pcb/costcalc.html>

NFC Reader / Writer Modules

- Retail USB Module RC-330
- Industrial module USART



Capabilities - Example

