

# ROLLER TOOL BOX CARE GUIDE 3500046 - USER GUIDE

**PLEASE READ ALL INSTRUCTIONS CAREFULLY AND RETAIN FOR FUTURE REFERENCE.**

## **INTENDED USE.**

Do not use the Tool Box for any purpose other than that for which it was designed. This Tool Box should not be used for playing, or as a walking aid, platform or chair.

This Tool Box is designed and intended for the mobility of tools only.

**IMPORTANT** This Tool Box is not a toy. Children should be supervised at all times to ensure they do not play with the product.

## **IMPORTANT SAFETY INFORMATION FOR USE.**

When opening and closing the Tool Box, be careful not to catch your fingers, clothing or other items.

Be careful when placing the Tool Box on an elevated plane in order to prevent it from falling. If the Tool Box falls on a person it could cause serious injury.

Do not put your weight on the pull handle since the Tool Box can fall over and cause injury.

Do not overload the Tool Box. Maximum load of 15kgs. If the Tool Box cannot close securely without the use of extra pressure, remove items from the Tool Box. An overloaded Tool Box is more susceptible to damage, fatigue and malfunction.

Do not overload the Tool Box with excess weight. This can damage the Tool Box.

**TIP** Always load heavier items at the bottom of the Tool Box. This will increase stability and help to prevent tip-over.

Always pay attention to your surroundings when walking with the Tool Box. It can present a trip hazard or obstruction to you or other people/vehicles if not properly handled.

Never forcibly roll the Tool Box over stairs or uneven surfaces. Improper use of wheels may result in damage to the Tool Box or cause the user to trip over.

Keep the Tool Box clear of soft ground or dirt. Dirt, dust or debris adhered to the wheel shafts can prevent the wheels from turning.

Do not lift the Tool Box by the Pull Handle. Always use the Carry handles provided.

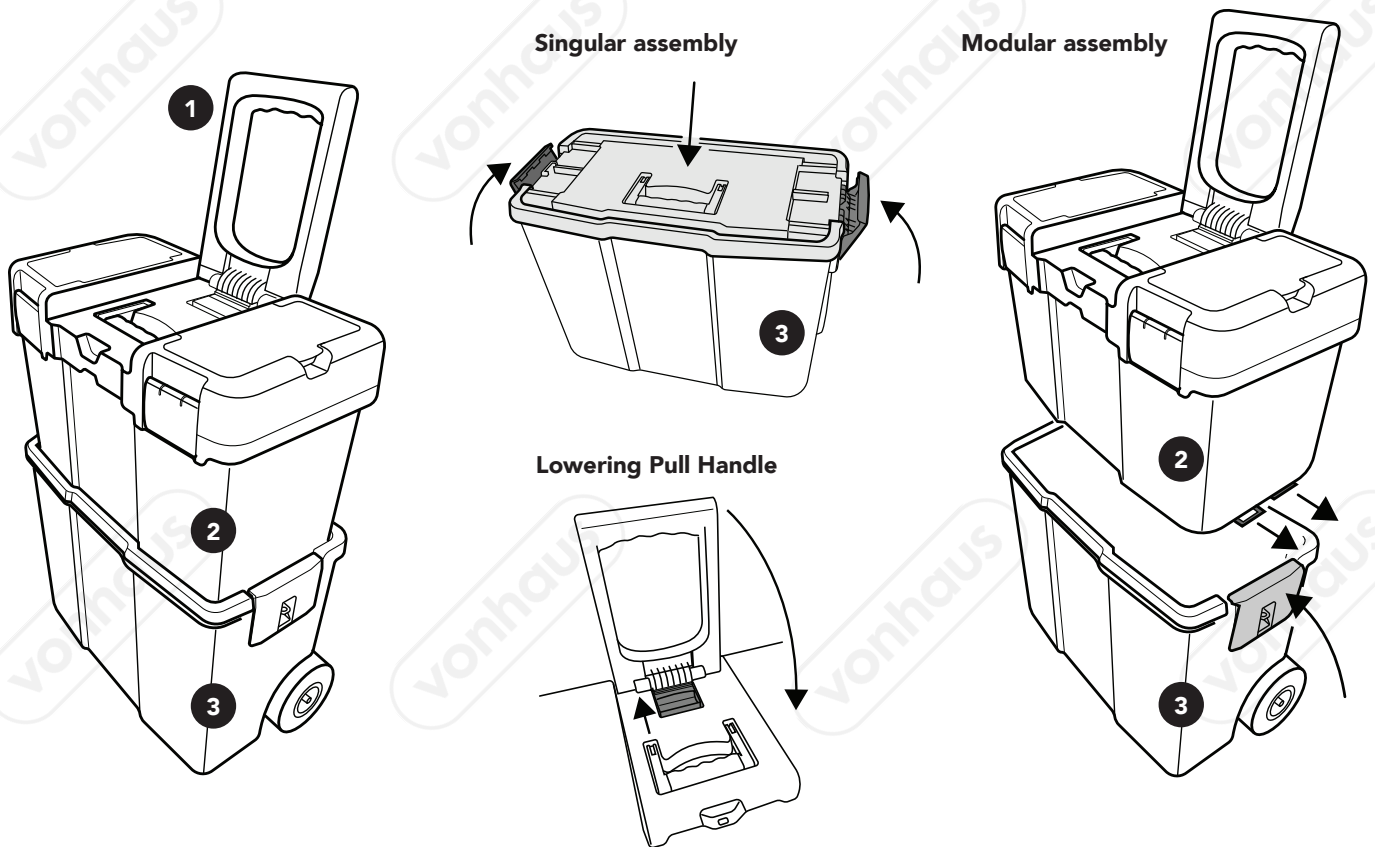
Take care not to subject the Tool Box to sharp knocks, impacts or drops as this can cause damage to the Tool Box. Do not attempt to force the items to fit into small compartments.

Do not leave the Tool Box near sources of heat or ignition such as radiators or open flames.

Do not use any harsh or abrasive detergents to clean the Tool Box. To clean the outer surface, wipe with a cloth dampened with suitable proprietary household cleaning fluid and dry thoroughly.

Do not submerge any part of this product in water or any other liquid for any reason.

# ASSEMBLY & USE



## DISPOSAL INFORMATION

Please recycle where facilities exist. Check with your local authority for recycling advice.

## WARRANTY

To register your product and find out if you qualify for a free extended warranty, go to:

[www.VonHaus.com/warranty](http://www.VonHaus.com/warranty)

Please retain a proof of purchase receipt or statement as proof of the purchase date.

The warranty only applies if the product is used solely in the manner indicated in this Care Guide, and all other instructions have been followed accurately. Any abuse of the product or the manner in which it is used will invalidate the warranty.

Returned goods will not be accepted unless re-packaged in its packaging and accompanied by a relevant and completed returns form. This does not affect your statutory rights.

No rights are given under this warranty to a person acquiring the product second-hand or for commercial or communal use.

## COPYRIGHT

All material in this instruction manual are copyrighted by DOMU Brands Ltd.

Any unauthorised use may violate worldwide copyright, trademark, and other laws.

Thank you for purchasing the Luggage.

VonHaus is a registered trademark of DOMU Brands Ltd  
Made in China for DOMU Brands Ltd M24 2RW.