

# DELL Technologies

## Dell Hybrid Client



World's first client computing software with hybrid cloud management enabling seamless access to applications and data whether they are in the cloud, in the data center or locally in a ready to deploy commercial solution<sup>1</sup>.

Learn more at [DellTechnologies.com/DellHybridClient](https://DellTechnologies.com/DellHybridClient)

# Dell Hybrid Client

A MODERN CLIENT SOLUTION

Dell Hybrid Client enables the most flexible client computing experience in a hybrid environment with private and public clouds and local resources to help boost user productivity<sup>2</sup>.

## DELL HYBRID CLIENT GIVES YOU CHOICE AND CONSISTENCY

Ensure simplicity, choice and flexibility for your organization and your workforce. Designed for anytime, anywhere access, Dell Hybrid Client provides security, accessibility and consistency to every part of the workday.

Dell Hybrid Client combines cloud-based management with a personalized user experience and the business agility and security benefits IT managers expect. Whether working in the office or remotely, all cloud resources are within reach with Dell Hybrid Client.



## EMPOWERED CLOUD WORKFORCE

Log in, work and search across resources with ease. Dell Hybrid Client brings together the user's apps and data for a productive workday no matter if they reside on public or private clouds.

Accessing files is easy, they automatically open in the application delivery mode defined by IT - cloud, VDI or local - to ensure availability, enhanced security and assist in cloud transition.

By enabling the "follow me" feature, Dell Hybrid Client delivers a consistent, personalized user experience across fixed or mobile devices controlled from the cloud.

# Dell Hybrid Client

A centrally managed software solution designed to deliver a fluid workflow when accessing applications and data delivered from private, public, and/or hybrid clouds.



## WHAT MAKES IT ONE-OF-A-KIND

### Instant access

With the convenient and secure single-sign-on<sup>3</sup>, your workforce gets immediate access to necessary apps and data, whether they're hosted locally, in the public or private cloud.

### Simplified workflow

Access seamlessly an array of IT-approved web apps, VDI apps and storage locations. And with the global file search, everything is easily found, and the workflow never interrupted.

### A consistent experience

By enabling the follow-me feature, end users get a consistent, personalized experience no matter which fixed or mobile device they log in from.

### Ready on day one

All features are available out of the box with intelligent, low-touch deployment from the cloud through Wyse Management Suite Pro.

## MULTIPLE WAYS TO BENEFIT

### Multiple apps delivery methods

Supports IT-approved cloud, virtual and local Linux apps and multiple operating modes: cloud, VDI or local or a combination of all to keep your users productive and ease the path to change.

### Multiple cloud providers

Works with leading cloud providers and cloud storage services to easily integrate into your existing cloud environment and quickly adapt as your strategy evolves.

### Multiple form factors

More flexibility to work from anywhere and the choice to work with select laptops, modular All-in-One solutions and fixed desktops.



# Dell Hybrid Client

## SAFE AT EVERY TOUCHPOINT

Protect user and company data through a secure, locked-down experience where user data is encrypted and user's access is controlled through specific permissions and security profiles from Wyse Management Suite Pro.

Ensure device compliance with local system security and application sandboxing preventing unwanted interactions and system corruption.

Ensure that apps and content can only be accessed in authorized ways through single sign on, multi-factor authentication<sup>4</sup> and file affiliation.



## INSTANT ACCESS. SIMPLIFIED WORKFLOWS. A CONSISTENT EXPERIENCE



# Endpoint selection from Dell's award-winning portfolio

## OPTIPLEX 3090 AND 7090 ULTRA

The world's most flexible modular all-in-one solution<sup>5</sup> featuring 11th Gen Intel® processors. Ultra is an innovative compute device that offers performance and function, in a patented zero footprint design. Ultra combines the sleekness of an all-in-one with the flexibility of a traditional desktop. Users get the best of both worlds – a beautiful, space-saving solution with minimal cabling plus all the key desktop features and functionality they require to do their jobs.



## LATITUDE 3320

Productivity meets modern design in the new Latitude 3320, a sleek and professional ultra-portable that is accessible for any business and any budget. Users can power through any day with Intel 11th Generation processors. Features both legacy and future-ready ports, including USB Type-C® supporting Dell's docking solution, so users can work comfortably anywhere.

## WYSE 5070

To meet the needs of transactional workers, the Wyse 5070 delivers high-speed processing with powerful Intel® quad core processors. The Wyse 5070 boosts user productivity with a high level of configurability and up to twenty ports and slots options. Features like True 4K graphics, multiple DisplayPort™ interfaces<sup>14</sup>, USB Type-C® and multiple network connection options help ensure an extended, productive user experience day after day.

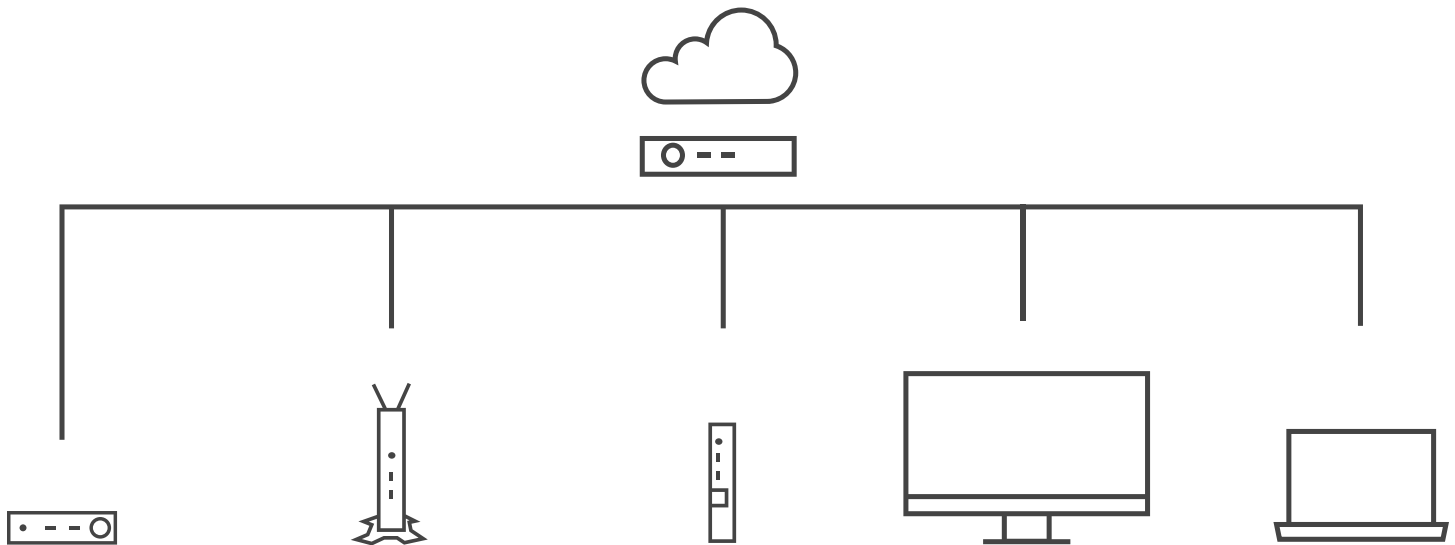


# Dell Hybrid Client

A COMPLETE SOLUTION

## WYSE MANAGEMENT SUITE

One tool does it all. Wyse Management Suite is a flexible cloud management solution that allows to centrally configure, monitor, manage and optimize endpoints powered by Dell Hybrid Client, anytime, anywhere. Wyse Management Suite is ideal for businesses small, large and in-between scaling from one to hundreds of thousands of devices. Our solution meets all levels of deployment.



Intelligent unified management. Manage all your modern clients powered by Dell Hybrid Client from the cloud and/the datacenter with this hybrid cloud management solution with floating license allocation for greater control and agility. The cloud-first, multitenant model supports your growing business requirements. Automated processes and intelligent insights with powerful dynamic device-grouping and rules-based automation deliver a flexible and proactive management approach.

User friendly, right from the start. From zero to productivity instantly with Wyse Management Suite Pro on public cloud<sup>6</sup>. Manage from anywhere and view critical alerts, notifications on the dashboard and send real time commands with one tap with the mobile app for real-time endpoint modern management of Dell endpoints and software. In addition, the management console is localized in 7 different languages making it convenient for our international teams to deploy it in their regional languages.

## DELL PROSUPPORT FOR SOFTWARE

Let us make hardware and software support easy, Dell Hybrid Client comes with Dell ProSupport<sup>7</sup> for Software. ProSupport offers 24x7 access to in-region advanced technology experts who contact IT when critical issues arise, so you can focus on the strategic work that moves your business ahead.

# Features & Technical Specifications

## DELL HYBRID CLIENT 1.5

Feature	Dell Hybrid Client 1.5 Technical Specifications <sup>8</sup>
Supported Client OS	Based on Canonical Ubuntu 20.04 LTS 64-bit
Subscription Options	1-year subscription to Dell Hybrid Client with Wyse Management Suite Pro and ProSupport for Software 3-year subscription to Dell Hybrid Client with Wyse Management Suite Pro and ProSupport for Software 5-year subscription to Dell Hybrid Client with Wyse Management Suite Pro and ProSupport for Software
Client device options (Factory Installed) <sup>9, 10, 11, 12</sup>	Latitude 3320 - 11th Generation Intel Core i5/i7 – 8 GB Memory – 128 GB or higher capacity SSD/HDD OptiPlex 3090 Ultra - 11th Generation Intel Celeron up to Core i5 – 8GB Memory – 32GB eMMC or higher capacity SSD OptiPlex 7090 Ultra - 11th Generation Intel Core i3/i5/i7 – 8 GB Memory – 128 GB or higher capacity SSD/HDD OptiPlex 7070 Ultra* - 8th Generation Intel Core i3/i5/i7 – 8 GB Memory – 128 GB or higher capacity SSD/HDD Wyse 5070 - Intel Celeron Dual Core or Pentium Quad Core – 8 GB Memory – 32 GB eMMC or higher capacity SSD Wyse 5070 Extended - Intel Pentium Quad Core – 8 GB Memory – 32 GB or higher capacity SSD
Conversion software	Easily convert a supported Windows, Linux or ThinOS client device to run Dell Hybrid Client. Please refer to the conversion guide available on <a href="https://www.dell.com/support/home/en-us/product-support/product/dell-hybrid-client/overview">https://www.dell.com/support/home/en-us/product-support/product/dell-hybrid-client/overview</a> for technical requirements
Unified Management	On-premises and cloud management – or a combination of both with floating license allocation between on-premise and cloud with Wyse Management Suite Pro version 3.2. Centralized deployment, configuration and management of user parameters, devices, operating system, apps and storage.
Supported Cloud Providers	Google Cloud Platform™ service Microsoft Azure with Azure Active Directory sync with On Prem Active Directory (HAAD)
Supported VDI Brokers	Citrix Virtual Apps and Desktops™ (formerly XenDesktop/XenApp) Microsoft® Windows Terminal Server VMware Horizon®
Local Browser	Firefox v84 Google Chrome v87
Local Apps	LibreOffice office suite: Writer (word processing), Calc (spreadsheets), Impress (presentations), Draw (vector graphics and flowcharts), Base (databases), and Math (formula editing). VLC media player Image viewer
Connections	OpenConnect VPN supporting GlobalProtect and Cisco Anyconnect VNC Viewer for remote shadowing (download from <a href="http://www.dell.com/support">www.dell.com/support</a> ) SSH Server (download from <a href="http://www.dell.com/support">www.dell.com/support</a> )
Supported Local Collaboration tools	Zoom client for Linux (included in the base image) Tested support for Microsoft Teams client for Linux (available from Microsoft.com)
File Explorer	Dell Hybrid Client delivers a seamless user experience for accessing local, USB, network and cloud files and folders through the File Explorer
Guest user	Guest user login allows a user to login to the device with a temporary guest user profile. In this profile, users will be able to access limited Dell Hybrid Client functionalities. All changes made in this session would be lost on user logout. Guest User account is supported with group level policy configuration from Wyse Management Suite. Local User is not supported.
File affiliation	Manage, prioritize (cloud, VDI or local) and restrict access to productivity applications using Wyse Management Suite. Automatic sync of files across different workspaces (local, VDI or cloud)
User Policy Groups	Allows IT administrators to apply configuration policies to a group of users based on user's Active Directory (AD) group or organizational unit (OU).
Enhanced Follow-me	With the enhanced Follow-me experience, user-specific settings and configurations for local browser, browser cache, desktop state (VDI, cloud, and local apps), specific device settings, and favorite bar personalization are preserved in a central repository, and the same settings are enabled in any other entitled device when logged in with the same user credentials

# Features & Technical Specifications

## DELL HYBRID CLIENT 1.5

Feature	Dell Hybrid Client 1.5 Technical Specifications <sup>8</sup>
<b>Security</b>	<ul style="list-style-type: none"><li>- Ability to set system network proxy settings</li><li>- Enhanced Security Profile – Ability to configure Firejail for 3rd party applications, Firewall configurations and Kernel/OS hardening based on security level configuration from Wyse Management Suite</li><li>- Randomized GRUB password and enforcement of password change from WMS</li><li>- Secure Boot</li><li>- Single Sign-On (SSO) into Enterprise AD (Kerberos-based authentication)</li><li>- Single Sign-On (SSO) into GCP and Azure.</li><li>- Smart card (Gemalto, YubiKey PIV) / CAC card support for local login and AD login</li><li>- Smart card (Gemalto, YubiKey PIV) / CAC card support from login to Citrix VDI session</li><li>- Smart card (Gemalto, YubiKey PIV) /CAC card support for browser-based Azure login to cloud applications.</li><li>- Smart card (Gemalto, YubiKey PIV) /CAC card support for VMware VDI session</li><li>- Trusted Platform Module 2.0</li><li>- User authentication with Active Directory, both local AD and Azure AD with On Prem users sync using AAD connect</li><li>- User authentication with Google Workspace application with Local AD sync using GCDS connect</li><li>- User File Encryption (zFS)</li></ul>
<b>Device Settings</b>	Enhance Device Settings UI to configure different system settings such as peripherals, network, VPN, regional & language configurations and power settings.
<b>Power Optimization</b>	Power optimization configuration from Wyse Management Suite via power profile settings (balanced, energy efficient, max performance) available
<b>User Security</b>	High level of user security in which the data of a user is encrypted and cannot be viewed by other users. User's access to Dell Hybrid Client is controlled through specific permissions and security profiles that are managed using Wyse Management Suite
<b>USB lockdown settings</b>	Granular control of USB ports and type of USB devices. Administrators can centrally enable/disable USB ports and define exceptions such as HID devices using Wyse Management Suite.
<b>Secure Browsing</b>	Provides a secure end point for your browser-based work environment: whitelist, blacklist, site isolation/multi containers are enabled by default, as an additional security layer to prevent attacks to succeed
<b>Built in VDI Broker clients</b>	<p>VMware Horizon client version 2012</p> <ul style="list-style-type: none"><li>- Blast Extreme, PCoIP and RDP protocol support</li><li>- Skype for Business</li><li>- Zoom optimization pack</li><li>- File type association</li><li>- Virtual printing on physical RDS host machine</li><li>- Multi session mode</li><li>- Logging copy and paste</li></ul> <p>Citrix Workspace app 2012</p> <ul style="list-style-type: none"><li>- File type association</li><li>- Single Sign On support (only from device login to remote session with Citrix StoreFront)</li><li>- Smartcard Login</li><li>- Browser Content Redirection</li><li>- USB Redirection</li><li>- HDX MediaStream</li><li>- HDX RealTime Webcam Video Compression</li><li>- Skype for Business / Citrix HDX RTME 2.9</li><li>- Microsoft Teams optimization</li><li>- Zoom optimization</li><li>- Multistream ICA</li><li>- HTML5 video redirection</li></ul> <p>Wyse RDP 8.1.07</p> <ul style="list-style-type: none"><li>- File type association</li><li>- Single Sign on support (only from device login to remote session)</li><li>- GPU accelerated rendering</li><li>- Dual 4K display support<sup>14</sup></li><li>- Multi-stream (simultaneous UDP and TCP connections)</li><li>- H.264 default video compression</li><li>- H.264 rendering</li></ul>
<b>Supported languages</b>	Local user interface: English, French, German, Italian, Spanish, Japanese, Korean, Chinese (Traditional and Simplified)
<b>Free trial software</b>	Get a 45-day trial software at <a href="http://www.wysemanagementsuite.com">www.wysemanagementsuite.com</a>



# Recommended Options & Accessories

## DELL HYBRID CLIENT

Recommended Options & Accessories<sup>8</sup> for OptiPlex 3090 and 7090 Ultra with Dell Hybrid Client



### OPTIPLEX ULTRA LARGE HEIGHT ADJUSTABLE STAND

Alter your display's height, tilt, and orientation for optimal comfort and productivity with this stand that can be used with 30 to 40in./101.6cm VESA compatible monitors.



### OPTIPLEX ULTRA STD HEIGHT ADJUSTABLE STANDS

Alter your display's height, tilt, and orientation for optimal comfort and productivity with these stands that can be used with 19 to 27in./68.58cm VESA compatible monitors.



### OPTIPLEX ULTRA FIXED STAND

This VESA compatible stand offers height adjustability for Dell or 3rd party 19 to 24in./60.96cm monitors.



### OPTIPLEX ULTRA OFFSET VESA MOUNT

Enables the Ultra to be mounted to the back of an E Series monitor or with Dell Single Monitor Arm (MSA20). Supports up to 38in./96.52cm VESA-compatible monitors.



### DELL 24 USB-C MONITOR WITHOUT STAND - P2419HC

Boost productivity with a 23.8in./60.96cm monitor with full range adjustability, 3-sided ultrathin borders and USB-connectivity. For the best experience, order the "without stand" option.



### OPTIPLEX ULTRA WALL MOUNT BRACKET

This wall bracket can be used for mounting the OptiPlex Ultra chassis onto a wall. It includes a cable cover to secure and manage cables.



### DELL SINGLE MONITOR ARM - MSA20

Keep your desk clutter free with the world's first monitor arm that offers swivel angle adjustment with a flip of a switch\* and can also be easily assembled and installed.

#### Monitors

Dell 20 Monitor E2020H  
Dell 22 Monitor E2220H  
Dell 24 Monitor E2420H  
Dell 22 Monitor E2216H  
Dell 27 Monitor E2720H  
Dell 24 Monitor E2417H  
Dell 22 Monitor P2219H (incl. WOST)  
Dell 23 Monitor P2319H  
Dell 24 Monitor P2418HZm  
Dell 24 Monitor 2418HT (Touch)  
Dell 24 Monitor P2419H (incl. WOST)  
Dell 24 Monitor P2419HC (Incl. WOST)

Dell 24 Monitor P2421  
Dell 24 Monitor P2421D  
Dell 24 USB-C Monitor - P2421DC  
Dell 27 Monitor P2719H  
Dell 27 Monitor P2719HC (incl. WOST)  
Dell 27 Monitor P2720D  
Dell 27 Monitor P2720DC  
Dell UltraSharp 24 Ultrathin Monitor U2419H  
Dell UltraSharp 24 Ultrathin USB-C Monitor U2419HC  
Dell UltraSharp Monitor U2421HE  
Dell UltraSharp 27 Ultrathin Monitor U2719D  
Dell UltraSharp 27 Ultrathin USB-C Monitor U2719DC  
Dell UltraSharp Monitor U2721DE

#### Adapters

Dell Display Port to Display Port (.6M)  
USB-C to USB-C cable (0.6 meter) to enable USB-C Displays  
Dell Single Monitor Arm - MSA20

USB-A to USB-B 3.0 Cable (0.6 meter)  
OptiPlex Ultra Height Adjustable Stand 19 in. - 27 in. monitors

#### Mounts & Stands

OptiPlex Ultra Wall Mount  
OptiPlex Ultra Offset VESA Mount

OptiPlex Ultra Fixed Stand for 19 in. - 24 in. monitors  
OptiPlex Ultra Large Height Adjustable Stand for 30 in. - 40 in. monitors

#### Audio

Dell UC Headset - UC150  
Dell Pro Stereo Headset - Skype for Business - UC350  
Jabra Evolve 65 MS Stereo Headset  
Jabra Engage 65 MS Stereo Headset  
Logitech C525 HD Webcam

Logitech BRIO 4k Ultra HD Webcam  
Logitech C930e HD Webcam  
Plantronics Savi W440M-400 Series convertible wireless headset DECT 6.0  
Plantronics Voyager Focus UC B825-M headset for Microsoft Lync  
Dell Mobile Adapter Speakerphone - MH3021P

# Recommended Options & Accessories

## DELL HYBRID CLIENT

Recommended Options & Accessories<sup>8</sup> for Latitude 3320 with Dell Hybrid Client



**DELL 24 MONITOR - E2420HS**  
A 23.8" monitor enhances your daily workflow. Featuring a height adjustable stand, Full HD resolution and integrated speakers in a space-saving design.



**DELL DOCK - WD19**  
Work at full speed with Dell's powerful USB-C dock. Charge our system faster, support up to three displays, and connect to your peripherals via a single cable.



**DELL MOBILE WIRELESS MOUSE - MS3320W**  
TWork seamlessly with dual mode connectivity (2.4GHz wireless or Bluetooth) and 36 months battery life.



**DELL NOTEBOOK POWER BANK PLUS USB C, 65 WH - PW7018LC**  
With fast high-power delivery of up to 65 Wh, this power bank can charge the widest range of USB-C<sup>®</sup> laptops, and mobile devices.



**DELL PRO SLIM BACKPACK 15 PO1520PS**  
A dependable everyday companion providing quality protection for your device.



**DELL PRO SLIM BRIEFCASE 15 PO1520CS**  
Keep your laptop and other essentials securely protected within the eco-friendly Dell Pro Slim Briefcase 15. Your devices inside will remain dry in wet, stormy weather-thanks to the water-resistant protective coating.



**DELL PRO STEREO HEADSET UC150**  
Hear every word clearly on your next call with the Dell Pro Stereo Headset, optimized to provide in-person call quality.



**DELL USB-C MOBILE ADAPTER DA300**  
Offers seamless video, network, and data connectivity, all in a compact design.

### Monitors

Dell 19 Monitor E1920H  
Dell 20 Monitor E2020H  
Dell 22 Monitor E2220H  
Dell 24 Monitor E2420HS  
Dell 27 Monitor E2720H  
Dell 27 Monitor E2720HS  
Dell 22 Monitor P2219H  
Dell 22 Monitor P2219HC  
Dell 23 Monitor P2319H  
Dell 24 Monitor P2418HZm  
Dell 24 Monitor P2419H  
Dell 24 Monitor P2419HC  
Dell 24 Monitor P2421  
Dell 24 Monitor P2421D

Dell 27 Monitor P2719H  
Dell 27 Monitor P2719HC  
Dell 27 Monitor P2720D  
Dell 27 Monitor P2720DC  
Dell UltraSharp 24 Ultrathin Monitor U2419H  
Dell UltraSharp 24 Ultrathin USB-C Monitor U2419HC  
Dell UltraSharp Monitor U2421HE  
Dell Ultrasharp Monitor - U2520D  
Dell UltraSharp 27 Ultrathin Monitor U2719D  
Dell UltraSharp 27 Ultrathin USB-C Monitor U2719DC  
Dell Ultrasharp Monitor - U2720Q  
Dell UltraSharp Monitor U2721DE

### Adapters

Dell Adapter - HDMI to DVI  
Dell Adapter - USB-C to Dual USB-A with Power Pass-Through Combo Adapter  
Dell Adapter - USB-C to HDMI/DisplayPort with Power Pass-Through Combo Adapter

Dell Adapter - USB-C to DisplayPort  
Dell Adapter - USB-C to HDMI/VGA/Ethernet/USB 3.0 - DA200  
Dell Adapter - USB-C to USB-A 3.0 - DA300

### Docking stations

Dell Dock - WD19  
Dell Performance Dock - WD19DC

Dell Thunderbolt Dock - WD19TB  
Dell Universal Dock - D6000

### Input

Dell Laser Wired Mouse - MS3220  
Dell Mobile Wireless Mouse - MS3320W  
Dell Mobile Pro Wireless Mice - MS5120W  
Dell Multi-Device Wireless Mouse - MS5320W  
Dell Wireless Mouse - WM126  
Dell Wireless Mouse - WM326

Dell Wireless Keyboard and Mouse - KM117  
Dell Wireless Keyboard and Mouse - KM636  
Dell Multi-Device Wireless Keyboard and Mouse Combo - KM7120W  
Logitech Wireless Combo - MK320  
Logitech Wireless Wave Combo MK550

### Audio

Dell UC Headset - UC150  
Dell USB Sound Bar - AC511  
Dell Mobile Adapter Speakerphone - MH3021

Dell Pro Stereo Headset - Skype for Business - UC350  
Dell Professional Sound Bar - AE515

### External Data Storage

Dell USB Slim DVD/RW Drive - DW316

Dell External SSD, USB Type-C<sup>®</sup>, USB 3.1 Gen2, 250GB

# Recommended Options & Accessories

## FOR WYSE 5070 WITH DELL HYBRID CLIENT

Recommended Options & Accessories<sup>8</sup> for Wyse 5070 with Dell Hybrid Client



DELL P SERIES & U-SERIES  
MONITOR MOUNT

Completely open your workspace with a behind-the-monitor mounting solution.



WYSE 5070 BEHIND THE MONITOR  
MOUNT FOR E- SERIES MONITORS

Allows the Wyse 5070 to be mounted to select Dell E- Series displays.



DELL 24 MONITOR P2419H WITH  
DELL DUAL MONITOR STAND | MDS19

Optimize your dual monitor setup to improve productivity and reduce desktop clutter.

### Monitors

Dell 22 Monitor E2220H  
Dell 24 Monitor E2420H  
Dell 24 Monitor E2420HS  
Dell 27 Monitor E2720H  
Dell 27 Monitor E2720HS  
Dell 22 Monitor P2219H  
Dell 22 Monitor P2219HC  
Dell 24 Monitor P2418HZm  
Dell 24 Monitor 2418HT (Touch)  
Dell 24 Monitor P2419H  
Dell 24 Monitor P2419HC  
Dell 24 USB-C Monitor - P2421DC  
Dell 27 Monitor P2719H

Dell 27 Monitor P2719HC  
Dell 27 Monitor P2720D  
Dell 27 Monitor P2720DC  
Dell 43 Monitor P4317Q  
Dell UltraSharp 24 U2421HE  
Dell UltraSharp 25 U2518D  
Dell UltraSharp 25 U2520D  
Dell UltraSharp 27 U2718Q  
Dell UltraSharp 27 Ultrathin Monitor - U2719D  
Dell UltraSharp 27 Ultrathin USB-C Monitor - U2719DC  
Dell Ultrasharp Monitor - U2720Q  
Dell UltraSharp Monitor - U2721DE  
Dell UltraSharp 43 U4320Q

### Adapters

Dell USB-C to DP  
Dell USB-C to VGA

Dell USB-C to HDMI  
Dell USB-C to Ethernet

### Keyboards

Dell Multimedia Keyboard KB216  
Dell Wireless Keyboard and Mouse KM636

Dell Smartcard Keyboard KB813

### Mice

Dell MS116 Optical Mouse

Dell Wired Laser Mouse Naruto

### Audio

Dell Pro Stereo Headset – Skype for Business UC350  
Microsoft Corporation LifeChat LX-6000 Headset  
Jabra Pro 935 MS Wireless headset (Mono) - Office Centric  
Dell Professional Sound Bar AE515  
Dell USB Sound Bar - AC511  
Jabra Evolve 65 MS Stereo Headset

Jabra Engage 65 MS Stereo Headset  
Logitech C525 HD Webcam  
Logitech BRIO 4k Ultra HD Webcam  
Logitech C930e HD Webcam  
Plantronics Savi W440M-400 Series convertible wireless headset - DECT 6.0  
Plantronics Voyager Focus UC B825-M headset for Microsoft Lync

# Modern clients powered with Dell Hybrid Client designed for the way people work

Dell Hybrid Client simplifies the cloud journey and enables users to securely access their applications & storage hosted on private or public cloud environments.



## Performance-oriented remote worker accessing a rich mix of local, cloud-based and virtualized apps

- Purpose built to support the next generation of cloud applications with local offloading of collaboration tools
- Built-in VDI protocols to connect to a remote workstation and perform graphic-intensive work
- Flexible office space as well as a space saving remote work solution with the modular all-in-one OptiPlex 7090 Ultra

## Knowledge worker accessing cloud-based resources

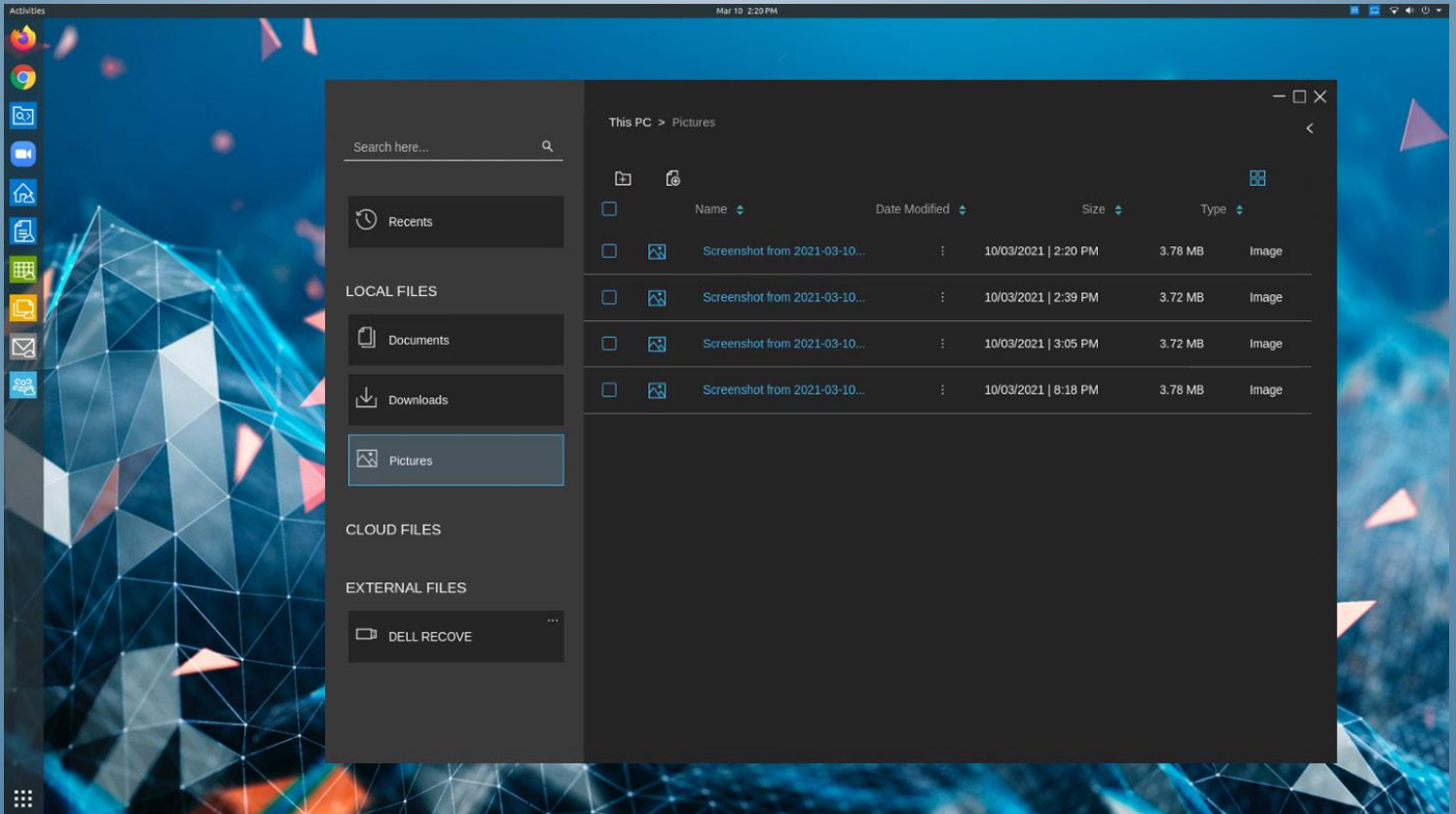
- Out of the box support for cloud-based productivity applications
- Single-sign-on across VDI and cloud resources
- Select the Latitude-based solution for remote work or a flexible modular all-in-one solution with OptiPlex 3090 Ultra to streamline office and home office space
- Centralized management of the user's devices and application orchestration from the cloud



## Task worker accessing VDI applications and transitioning to cloud resources

- Highly managed, cost-effective client device
- Full-featured local browser with security parameters centrally managed (restrict/allow URLs, restrict plugins, etc...)
- Out of the box access to cloud-based productivity apps and support for local Linux apps reducing the strain on VDI back-end resources
- Built-in support for VDI brokers from leading vendors (Citrix, VMware and Microsoft)
- Easy to adopt, leveraging local Active Directory or sync on-premises Azure AD
- Multi-factor authentication<sup>4</sup>

Ensure simplicity, choice and consistency for your organization and workforce with Dell Hybrid Client. Dell exclusive cloud-managed client software solution designed for anytime, anywhere access



File Explorer in Dell Hybrid Client delivers a seamless user experience for accessing local, USB, shared network and cloud files and folders.

1. Based on Dell analysis of Dell Hybrid Client software preinstalled on select Dell commercial clients with Wyse Management Suite Pro Dell Hybrid Client license v. comparative solutions, July 2020. For more details, visit [www.DellTechnologies.com/DellHybridClient](http://www.DellTechnologies.com/DellHybridClient), Legal AD #G20000253
2. Based on Dell analysis of Dell Hybrid Client software (version 1.5 or above) preinstalled on select Dell commercial clients with Wyse Management Suite Pro v. comparative solutions, Jan 2021. For more details, visit [www.DellTechnologies.com/DellHybridClient](http://www.DellTechnologies.com/DellHybridClient)
3. Single sign-on to VMware Horizon not supported in Dell Hybrid Client 1.5. Single sign-on supported with Kerberos only.
4. Multi Factor Authentication - Smartcard only, for initial system login and Citrix and Azure cloud apps
5. Based on Dell analysis of competitive products, September 2020. OptiPlex Ultra supports Dell and 3rd party VESA compatible displays up to 40", sold separately.
6. License activation required.
7. Dell Services: Availability and terms of Dell Services vary by region. For more information, visit [www.dell.com/service-descriptions](http://www.dell.com/service-descriptions).
8. Offering may vary by region. Some items may be available after product introduction. For complete details, refer to the Technical Guidebook published on [www.dell.com](http://www.dell.com).
9. Not all features and services are available in all countries or sales segments/customers. Contact your Dell Technologies Services Representative for availability.
10. A 64-bit operating system is required to support 4GB or more of system memory.
11. GB means 1 billion bytes and TB equals 1 trillion bytes; significant system memory may be used to support graphics, depending on system memory size and other factors.
12. GB means 1 billion bytes and TB equals 1 trillion bytes; actual capacity varies with preloaded material and operating environment and will be less.
13. Refer to the administrator guide for the detail steps to install Dell Hybrid Client on the OptiPlex 7070 Ultra device. The Dell Hybrid Client software is preloaded with Dell Client Agent-Enabler (DCAE) installed
14. The maximum number of displays and maximum resolution in a session will vary depending on partner broker, protocol, and virtual machine types and configurations