



TRADEPOINT MARINE

TRADEPOINT'S MULTIPLE DEEP-WATER BERTHS LISTED BELOW ARE ACCESSED VIA THE 50' BREWERTON CHANNEL WHICH SERVICES THE PORT OF BALTIMORE

SHIPYARD

INNER BERTH

MARINE OVERVIEW

INNER BERTH

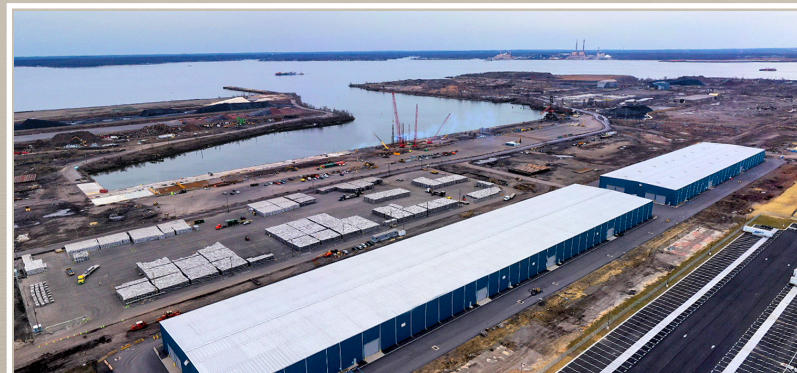
- 2,200' long Inner Berth with 38' of water
- Newly constructed 20-acre berth designed for auto ro-ro, breakbulk, and project cargo
- Heavy uniform quayside bearing capacity of 3,000 psf
- 85-ton Gottwald shore crane with multiple grab types available
- Significant existing Foreign Trade Zone footprint
 - 200,000 sf warehouse
 - Over 15 acres of secured outdoor storage yards
 - Direct rail service
 - Ability to expand based on customer needs

FINGER PIER

- 1,150' long Finger Pier with 41' of water
- Adjacent to over 100 acres of existing dry bulk & future liquid bulk storage areas
- Ability to dock and work vessels on both sides of the Finger Pier

SHIPYARD

- 850' long pier with 31' of water and a 50-ton shore crane
- Dedicated barge berth with multi-docker for efficient cargo discharge and loading
- 1,200' x 200' dry dock for vessel repair or construction activities
 - (2) 200-ton Clyde cranes available with ability to traverse each side of the dock
- Warehouses ranging from 50,000 sf to 100,000 sf
- Over 50 acres of graded outdoor storage space
- Certified in accordance with the US Coast Guard standards



TRADEPOINT MARINE LEVERAGES RAIL AND TRUCK ACCESS TO PROVIDE SIGNIFICANT LOGISTICAL ADVANTAGES TO OUR CUSTOMERS

TRUCK ACCESS

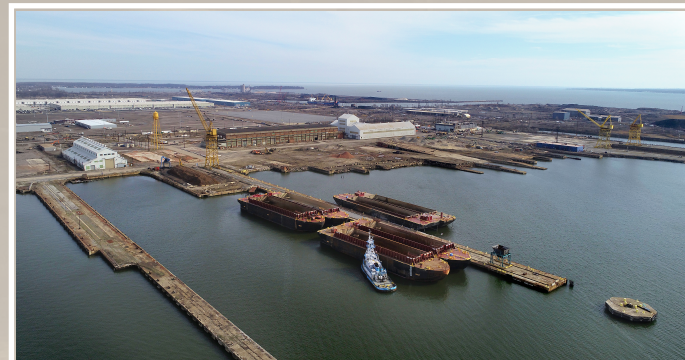
- Unparalleled access to interstate highways with I-695 bisecting the property, and nearby connections to both I-95 for north-south movements and I-70 for cargo going west
- Short transit time from other Port of Baltimore terminals for efficient drayage opportunities
- Heavyweight corridor between Port of Baltimore container terminal and Tradepoint provides flexibility for truck weights up to 100,000 lbs GVW
- Truck scales located in close proximity to deep water berths and storage areas

SECURITY

- USCG compliant Facility Security Plan
- Constant roving security that can be customized to individual customer requirements
- Secure & restricted area designed to allow for non-TWIC access to almost all indoor and outdoor storage locations

RAIL CONNECTIVITY

- Daily switching with two Class I railroads (CSX and Norfolk Southern) provided by Tradepoint Atlantic's wholly owned short line railroad, Tradepoint Rail
- Over 70 miles of track on site
 - Capacity to handle multiple unit trains on site concurrently
 - Significant ability to stage railcars to facilitate flexible marine cargo movement
 - Access to dedicated track space for marine tenants
- Near berth rail access for project, break-bulk cargo, and other transloading operations



FOR ADDITIONAL INFORMATION, PLEASE CONTACT:

WILLIAM PELLINGTON
Executive Vice President
+1 410 244 3137
bill.pellington@cbre.com

THOMAS MINK
Senior Vice President
+1 410 244 3171
toby.mink@cbre.com

JON CASELLA
Senior Vice President
+1 410 244 3127
jonathan.casella@cbre.com



tradepointatlantic.com

