

DRAFT

INTERNATIONAL
STANDARD

ISO/ASTM
DIS
52116

ISO/TC 85

Secretariat: **AFNOR**

Voting begins on:
2011- -

Voting terminates on:
2011- -

Practice for dosimetry for a self- contained dry-storage gamma-ray irradiator

Pratique de la dosimétrie appliquée à un irradiateur gamma
renfermant une source auto-protégée entreposée à sec

RECIPIENTS OF THIS DOCUMENT ARE INVITED TO
SUBMIT, WITH THEIR COMMENTS, NOTIFICATION
OF ANY RELEVANT PATENT RIGHTS OF WHICH
THEY ARE AWARE AND TO PROVIDE SUPPORTING
DOCUMENTATION.

IN ADDITION TO THEIR EVALUATION AS BEING
ACCEPTABLE FOR INDUSTRIAL, TECHNOLOGI-
CAL, COMMERCIAL, AND USER PURPOSES,
DRAFT INTERNATIONAL STANDARDS MAY ON OC-
CASION HAVE TO BE CONSIDERED IN THE LIGHT
OF THEIR POTENTIAL TO BECOME STANDARDS
TO WHICH REFERENCE MAY BE MADE IN NA-
TIONAL REGULATIONS.



Reference number
ISO/ASTM DIS 52116:2011(E)

© ISO/ASTM International 2011

PDF disclaimer

This PDF file may contain embedded typefaces. In accordance with Adobe's licensing policy, this file may be printed or viewed but shall not be edited unless the typefaces which are embedded are licensed to and installed on the computer performing the editing. In downloading this file, parties accept therein the responsibility of not infringing Adobe's licensing policy. Neither the ISO Central Secretariat nor ASTM International accepts any liability in this area.

Adobe is a trademark of Adobe Systems Incorporated.

Details of the software products used to create this PDF file can be found in the General Info relative to the file; the PDF-creation parameters were optimized for printing. Every care has been taken to ensure that the file is suitable for use by ISO member bodies and ASTM members. In the unlikely event that a problem relating to it is found, please inform the ISO Central Secretariat or ASTM International at the addresses given below.

Copyright notice

This ISO/ASTM document is a Draft International Standard and is copyright-protected by ISO and ASTM International. Except as permitted under the applicable laws of the user's country, neither this ISO/ASTM draft nor any extract from it may be reproduced, stored in a retrieval system or transmitted in any form or by any means, electronic, photocopying, recording or otherwise, without prior written permission being secured.

Requests for permission to reproduce should be addressed to either ISO at the address below or ISO's member body in the country of the requester. In the United States, such requests should be sent to ASTM International.

ISO copyright office
Case postale 56 • CH-1211 Geneva 20
Tel. +41 22 749 01 11
Fax +41 22 749 09 47
E-mail copyright@iso.org
Web www.iso.org

ASTM International,
100 Barr Harbor Drive, PO Box C700,
West Conshohocken, PA 19428-2959,
USA
Tel. +610 832 9634
Fax +610 832 9635
E-mail khooper@astm.org
Web www.astm.org

Reproduction may be subject to royalty payments or a licensing agreement.

Violators may be prosecuted.

Explanatory Material

The international standard ISO/ASTM 52116 was part of the Pilot Project between ISO and ASTM International to develop and maintain a group of ISO/ASTM dosimetry standards for radiation processing. In July 2004, ISO was notified of the need for periodic review of ISO/ASTM PRACTICE 51261 and 2 additional ISO/ASTM standards. ISO/TC 85 N788, the ballot for the maintenance of the 3 ISO/ASTM standards was sent to the TC 85 member bodies for recommendations regarding re-approval, revision, or withdrawal.

As part of the five-year review, the updated of ISO/ASTM 52116 was originally considered to be minor in nature; however, in order to harmonize this standard with other similar more-recently revised standards (i.e. ISO/ASTM 51939:2005 Blood Irradiation), the resulting updated document required major changes.

The restructuring of the E10.01 set of Radiation Processing Dosimetry standards with the new ASTM E2628 – 09 and ASTM E2701 – 09 as top level documents also required significant editorial changes. It had been agreed by E10.01 members that all revised standards would follow a new common format.

ISO/ASTM 52116 was completely revised and balloted by Subcommittee E10.01. The Subcommittee ballot received no negative votes. Before submitting a revised draft for concurrent ASTM Committee Ballot and ISO/ASTM DIS ballot, it was decided to wait until some questions regarding the new common format were resolved. However, because of the ASTM balloting rules, which states that drafts approved by the Subcommittee are automatically balloted as a Main Committee Ballot, the same draft balloted by Subcommittee E10.01 was balloted by ASTM as a Main Committee Ballot and approved.

The present draft prepared for the ISO DIS Ballot incorporates editorial changes from both the E10.01 Subcommittee Ballot and the ASTM Main Committee Ballot.

Contents

Page

1 Scope	1
2 Referenced documents	1
3 Terminology	1
4 Significance and use	2
5 Types of facilities and modes of operation	2
6 Radiation source characteristics	2
7 Dosimetry systems	3
8 Installation qualification (IQ)	3
9 Operational qualification (OQ)	3
10 Performance qualification (PQ)	5
11 Routine sample processing	6
12 Measurement uncertainty	6
13 Keywords	6
Annexes	7

Foreword

ISO (the International Organization for Standardization) is a worldwide federation of national standards bodies (ISO member bodies). The work of preparing International Standards is normally carried out through ISO technical committees. Each member body interested in a subject for which a technical committee has been established has the right to be represented on that committee. International organizations, governmental and non-governmental, in liaison with ISO, also take part in the work. ISO collaborates closely with the International Electrotechnical Commission (IEC) on all matters of electrotechnical standardization.

Draft International Standards adopted by the technical committees are circulated to the member bodies for voting. Publication as an International Standard requires approval by at least 75% of the member bodies casting a vote.

ASTM International is one of the world's largest voluntary standards development organizations with global participation from affected stakeholders. ASTM technical committees follow rigorous due process balloting procedures.

A pilot project between ISO and ASTM International has been formed to develop and maintain a group of ISO/ASTM radiation processing dosimetry standards. Under this pilot project, ASTM Subcommittee E10.01, Dosimetry for Radiation Processing, is responsible for the development and maintenance of these dosimetry standards with unrestricted participation and input from appropriate ISO member bodies.

Attention is drawn to the possibility that some of the elements of this document may be the subject of patent rights. Neither ISO nor ASTM International shall be held responsible for identifying any or all such patent rights.

International Standard ISO/ASTM 52116 was developed by ASTM Committee E10, Nuclear Technology and Applications, through Subcommittee E10.01, and by Technical Committee ISO/TC 85, Nuclear energy.



Standard Practice for Dosimetry for a Self-Contained Dry-Storage Gamma-Ray Irradiator¹

This standard is issued under the fixed designation ISO/ASTM 52116; the number immediately following the designation indicates the year of original adoption or, in the case of revision, the year of last revision.

1. Scope

1.1 This practice outlines dosimetric procedures to be followed with self-contained dry-storage gamma-ray irradiators. For irradiators used for routine processing, procedures are given to ensure that product processed will receive absorbed doses within proscribed limits.

1.2 This practice covers dosimetry in the use of dry-storage gamma-ray irradiators, namely self-contained dry-storage ¹³⁷Cs or ⁶⁰Co irradiators (shielded freestanding irradiators). It does not cover underwater pool sources, panoramic gamma-ray sources, nor does it cover self-contained bremsstrahlung X-ray units.

1.3 The absorbed-dose range for the use of the dry-storage self-contained gamma-ray irradiators covered by this practice is typically 1 to 10⁵ Gy, depending on the application. The absorbed-dose rate range typically is from 10⁻² to 10³ Gy/min.

1.4 For irradiators supplied for specific applications, specific ISO/ASTM or ASTM practices and guides provide dosimetric procedures for the application. For procedures specific to dosimetry in blood irradiation, see ISO/ASTM Practice 51939. For procedures specific to dosimetry in radiation research on food and agricultural products, see ISO/ASTM Practice 51900. For procedures specific to radiation hardness testing, see ASTM Practice E1249. For procedures specific to the dosimetry in the irradiation of insects for sterile release programs, see ISO/ASTM Guide 51940. In those cases covered by ISO/ASTM 51939, 51900, 51940, or ASTM E1249, those standards take precedence.

1.5 This document is one of a set of standards that provides recommendations for properly implementing and utilizing dosimetry in radiation processing. It is intended to be read in conjunction with ASTM E2628, "Practice for Dosimetry in Radiation Processing".

1.6 *This standard does not purport to address all of the safety concerns, if any, associated with its use. It is the responsibility of the user of this standard to establish appropriate safety and health practices and determine the applicability of regulatory limitations prior to use.*

2. Referenced documents

2.1 ASTM Standards:²

E170 Terminology Relating to Radiation Measurements and Dosimetry

E1249 Practice for Minimizing Dosimetry Errors in Radiation Hardness Testing of Silicon Electronic Devices Using Co-60 Sources

E2628 Practice for Dosimetry in Radiation Processing

E2701 Guide for Performance Characterization of Dosimeters and Dosimetry Systems for Use in Radiation Processing

2.2 ISO/ASTM Standards:²

51261 Practice for Calibration of Routine Dosimetry Systems for Radiation Processing

51539 Guide for Use of Radiation-Sensitive Indicators

51707 Guide for Estimating Uncertainties in Dosimetry for Radiation Processing

51900 Guide for Dosimetry in Radiation Research on Food and Agricultural Products

51939 Practice for Blood Irradiation Dosimetry

51940 Guide for Dosimetry for Sterile Insects Release Programs

2.3 International Commission on Radiation Units and Measurements (ICRU) Reports:³

ICRU 60 Fundamental Quantities and Units for Ionizing Radiation Metrology

2.4 ANSI Standards:⁴

ANSI/HPS N43.7 Safe Design and Use of Self-Contained, Dry Source Storage Gamma Irradiators (Category I)

2.5 ISO Publications:⁵

GUM Guide to the Expression of Uncertainty in Measurements, 1995

VIM International Vocabulary of Basic and General Terms in Metrology

3. Terminology

3.1 Definitions:

¹ This practice is under the jurisdiction of ASTM Committee E10 on Nuclear Technology and Applications and is the direct responsibility of Subcommittee E10.01 on Radiation Processing: Dosimetry and Applications, and is also under the jurisdiction of ISO/TC 85/WG 3.

Current edition approved by ASTM Dec. 15, 2010. Published XXXX. Originally published as ASTM E 2116-00. Last previous edition ASTM E 2116-00. The present International Standard ISO/ASTM 52116:2010(E) replaces E 2116-00 and is a major revision of the last previous edition ISO/ASTM 52116:2002:(E).

² For referenced ASTM and ISO/ASTM standards, visit the ASTM website, www.astm.org, or contact ASTM Customer Service at service@astm.org. For *Annual Book of ASTM Standards* volume information, refer to the standard's Document Summary page on the ASTM website.

³ International Commission on Radiation Units and Measurements (ICRU), 7910 Woodmont Ave., Suite 800, Bethesda, MD 20810, U.S.A.

⁴ Available from the Health Physics Society, <http://hps.org>.

⁵ International Organization for Standardization (ISO), 1 rue de Varembe, Case Postale 56, CH-1211 Geneva 20, Switzerland.



3.1.1 *absorbed-dose mapping*—measurement of absorbed dose within an irradiated product to produce a one-, two-, or three-dimensional distribution of absorbed dose, thus rendering a map of absorbed-dose values.

3.1.2 *calibration*—[VIM, 6.11] set of operations under specified conditions, which establishes the relationship between values indicated by a measuring instrument or measuring system, and the corresponding values realised by standards traceable to a nationally or internationally recognised laboratory.

3.1.2.1 *Discussion*—Calibration conditions include environmental and irradiation conditions present during irradiation, storage and measurement of the dosimeters that are used for the generation of a calibration curve. To achieve stable environmental conditions, it may be necessary to condition the dosimeters before performing the calibration procedure.

3.1.3 *dose uniformity ratio*—ratio of the maximum to the minimum absorbed dose within the irradiated product.

3.1.4 *measurement management system*—set of interrelated or interacting elements necessary to achieve metrological confirmation and continual control of measurement processes.

3.1.5 *transit dose*—absorbed dose delivered to a product (or a dosimeter) while it travels between the non-irradiation position and the irradiation position, or in the case of a movable source while the source moves into and out of its irradiation position.

3.2 Definitions of other terms used in this standard that pertain to radiation measurement and dosimetry may be found in ASTM Terminology E170. Definitions in ASTM Terminology E170 are compatible with ICRU 60; that document, therefore, may be used as an alternative reference.

4. Significance and use

4.1 The design and operation of a self-contained irradiator should ensure that reproducible absorbed doses are obtained when the same irradiation parameters are used. Dosimetry is performed to determine the relationship between the irradiation parameters and the absorbed dose.

4.1.1 For most applications, the absorbed dose is expressed as absorbed dose to water (see ISO/ASTM Practice 51261). For conversion of absorbed dose to water to that to other materials, for example, silicon, see Annex A1 of ISO/ASTM Practice 51261.

4.2 Self-contained dry-storage gamma-ray irradiators contain properly shielded radioactive sources, namely ^{137}Cs or ^{60}Co , that emit ionizing electromagnetic radiation (gamma rays). These irradiators have an enclosed, accessible irradiator sample chamber connected with a sample positioning system, for example, irradiator drawer, rotor, or irradiator turntable, as part of the irradiation device.

4.3 Self-contained dry-storage gamma-ray irradiators can be used for many radiation processing applications, including the calibration irradiation of dosimeters; studies of dosimeter influence quantities; radiation effects studies, and irradiation of materials or biological samples for process compatibility studies; batch irradiations of microbiological, botanical, or in-vitro samples; irradiation of small animals; radiation “hard-

ness” testing of electronics components and other materials; and batch radiation processing of containers of samples.

NOTE 1—Self-contained dry-storage gamma-ray irradiators contain a sealed radiation source, or an array of sealed radiation sources securely held in a dry container constructed of solid materials. The sealed radiation sources are shielded at all times, and human access to the chamber undergoing irradiation is not physically possible due to the irradiator’s design configuration (see ANSI/HPS N43.7).

NOTE 2—For reference-standard dosimetry, the absorbed dose and absorbed-dose rate can be expressed in water or other material which has similar radiation absorption properties to that of the samples or dosimeters being irradiated. In some cases, the reference-standard dosimetry may be performed using ionization chambers, and may be calibrated in terms of exposure (C kg^{-1}), or absorbed dose to air, water or tissue (Gy). Measurements performed in terms of exposure apply to ionization in air, and care should be taken to apply that measurement to the sample being irradiated.

5. Types of facilities and modes of operation

5.1 *Facility Types*—Typical self-contained dry-storage gamma-ray irradiators are illustrated in Annex A1. These irradiators house the radiation source(s) in a protective lead shield (or other appropriate material), and usually have a sample positioning mechanism tied to an accurate calibrated reset timer to lower or rotate the sample holder from the load/unload position to the irradiation position and back to the load/unload position. Details on the calibration of dosimetry systems and dose mapping in such irradiators may be found, respectively in ISO/ASTM Guide 51261 and in this practice. Details on the designs of such irradiators and on safety considerations in the use of such irradiators may be found in ANSI/HPS N43.7.

5.2 *Modes of Operation*—Three common modes of operation are described. This does not purport to include all modes of operation.

5.2.1 One method of use is to rotate the sample holder on an irradiator turntable in front of the source such that the only points that remain a fixed distance from the source are along an axis of rotation (ANSI/HPS N43.7).

5.2.2 A second method is to distribute the source in an annular array, resulting in a relatively uniform absorbed-dose distribution. In this design, the irradiator turntable normally would not be necessary.

5.2.3 A third method is to use opposed sources with appropriate beam flattening to obtain a uniform dose throughout the sample.

6. Radiation source characteristics

6.1 The radiation sources used in the irradiation devices considered in this practice consist of sealed elements of ^{60}Co or ^{137}Cs , which are typically linear rods or pencils arranged singly or in a planar array or cylindrical array.

6.2 Cobalt-60 emits photons with energies of approximately 1.17 and 1.33 MeV in nearly equal proportions; cesium-137 emits photons with energies of approximately 0.662 MeV.



6.3 The radioactive decay half-lives for ^{60}Co and ^{137}Cs are regularly reviewed and updated. The most recent publication by the National Institute of Standards and Technology⁶ gave values of 1925.20 (± 0.25) days for ^{60}Co and 11018.3 (± 9.5) days for ^{137}Cs . In addition, the ^{137}Cs radiation source may contain radioimpurities which should be qualified by the source manufacturer.

6.4 For pure ^{60}Co and ^{137}Cs gamma-ray sources, the only variation in the source strength is the known reduction in the activity caused by radioactive decay. The reduction in the source strength and the required increase in the irradiation time to deliver the same dose may be calculated or obtained from tables provided by the irradiator manufacturer.

7. Dosimetry systems

7.1 The basic requirements that apply when making absorbed dose measurements are given in ASTM E2628. ASTM E2628 also provides guidance on the selection of dosimetry systems and describes the classification of dosimeters based on two criteria. Users are directed to other standards that provide specific information on individual dosimetry systems, calibration methods, and uncertainty estimation.

NOTE 3—The operation of a self-contained dry-storage irradiator, absorbed-dose measurements made in the sample under controlled environmental and geometrical conditions of calibration, testing, or processing provide an independent quality control record.

8. Installation qualification (IQ)

8.1 *Objective*—The purpose of an installation qualification (IQ) program is to obtain and document evidence that the irradiator and measurement instruments have been delivered and installed in accordance with their specifications. IQ includes documentation of the irradiator equipment and measurement instruments; establishment of testing, operation and calibration procedures for their use; and verification that the installed irradiator equipment and measurement instruments operate according to specification.

NOTE 4—Table A2.1 gives some recommended steps in the following areas: installation qualification, operational qualification, performance qualification, and routine product processing.

8.2 *Equipment Documentation*—Establish and document an IQ program that includes descriptions of the instrumentation and equipment installed at the facility. This documentation shall be retained for the life of the facility. At a minimum, it shall include:

8.2.1 A description of the irradiator's specifications, characteristics and parameters, including any modifications made during or after installation,

8.2.2 A description of the location of the irradiator within the operator's premises,

8.2.3 Operating instructions and standard operating procedures for the irradiator and associated measurement instruments,

8.2.4 Licensing and safety documents and procedures, including those required by regulatory and occupational health and safety agencies,

8.2.5 A description of a calibration program to ensure that all processing equipment that may influence absorbed-dose delivery is calibrated periodically (for example, the timer mechanism),

8.2.6 Operating procedures and calibration procedures for associated measurement instruments or systems.

8.3 *Equipment Testing and Calibration*—Test all processing equipment and instrumentation that may influence absorbed dose in order to verify satisfactory operation of the irradiator within the design specifications.

8.3.1 Implement a documented calibration program to ensure that all processing equipment and instrumentation that may influence absorbed-dose delivery are calibrated periodically.

8.3.2 If any modification or change is made to the irradiator equipment or measurement instruments during the installation qualification phase, they shall be re-tested.

8.4 For self-contained irradiators, some IQ may begin prior to the shipment of the irradiator to the customer's site.

9. Operational qualification (OQ)

9.1 *Objective*—The purpose of operational qualification (OQ) of an irradiation facility is to establish baseline data for evaluating irradiator effectiveness, predictability, and reproducibility for the range of conditions of operation for key processing parameters that affect absorbed dose in the product. As part of this process, dosimetry may be performed to: (1) establish relationships between the absorbed dose for a reproducible geometry and the process parameters of the irradiator, (2) measure absorbed-dose distributions in product (dose mapping), (3) characterize absorbed dose variations when irradiator and processing parameters fluctuate statistically through normal operations, and (4) measure the absorbed-dose rate at a reference position within the holder filled with product.

9.1.1 For self-contained irradiators, OQ may begin prior to the shipment of the irradiator to the customer's site. As part of release-for-shipment criteria, the irradiator manufacturer may perform absorbed-dose mapping to establish baseline data. After the unit is installed at the user's site, OQ is performed as part of the user's quality assurance plan.

9.2 *Dosimetry Systems*—Calibrate the routine dosimetry system to be used at the facility.

9.3 *Irradiator Characterization*—The absorbed dose received by any portion of product depends on the irradiator parameters (such as the source activity at the time of irradiation, the geometry of the source, the source-to-product distance and the irradiation geometry) and the processing parameters (such as the irradiation time, the product composition and density and the loading configuration).

9.3.1 *Absorbed-Dose Rate*—A reference- or transfer-standard dosimetry system, traceable to nationally or internationally recognized standards, shall be used to measure the absorbed-dose rate within product or simulated product at a reference position (such as the center of the product or

⁶ Unterweger, M. P., Hoppes, D. D., Schima, F. J., and Coursey, J. S., "Radionuclide Half-Life Measurements," National Institute of Standards and Technology, available online at <http://physics.nist.gov/HalfLife> (updated October 5, 2010).



simulated product volume). For a defined irradiation geometry, the absorbed-dose rate at the reference position should have a reproducible and documented relationship to the absorbed-dose rate at locations of maximum (D_{max}) and minimum (D_{min}) dose rate.

9.3.1.1 Most manufacturers of irradiators use a reference-standard dosimetry system to measure absorbed-dose rate at a reference position within simulated product following installation of (or, in the case of some self-contained units, before shipping) the irradiator.

9.3.1.2 Reference- or transfer-standard dosimeter measurement of absorbed-dose rate at a reference position should be repeated periodically (for example, every two years for a gamma facility) and following any changes to the source, geometry, or other irradiator parameter that could affect absorbed-dose rate.

9.3.2 *Dose Mapping*—Ideally, the irradiation process is designed to irradiate product uniformly throughout the irradiated volume; in reality, a certain variation in absorbed-dose through the product will exist. The OQ process includes mapping the absorbed-dose distributions for product (or simulated product), and identifying the magnitudes and locations D_{max} and D_{min} within the product.

9.3.2.1 Map the absorbed-dose distribution by placing dosimeters throughout the actual or simulated product. Select placement patterns that can identify the locations of D_{max} and D_{min} . Dosimetry data from previously characterized irradiators of the same design or theoretical calculations may provide useful information for determining the number and locations of dosimeter sets needed for this characterization process.

NOTE 5—In the case of static irradiations (such as when the product is located at the center of an annular source array), the dose mapping should be performed in three dimensions; otherwise, two-dimensional dose mapping usually suffices. A common method for presenting the dose mapping results is to use isodose curves (lines or surfaces of constant absorbed dose through the actual or simulated product).

9.3.2.2 Changes in the product handling system (for example, irradiator turntable) requires a new absorbed-dose mapping.

9.3.3 *Transit Dose*—The transit dose and its relation to total absorbed dose should be quantified.

9.3.3.1 Dosimetry performed at the same dose level as used for product irradiation includes the transit dose contribution. Therefore, it is usually unnecessary to measure the transit dose separately.

9.3.3.2 Procedures for measuring and correcting for transit dose in terms of transit time are given in Annex A3.

9.3.3.3 In self-contained gamma irradiators, the transit dose should be small relative to the total dose delivered (for example, less than 1 %).

9.3.3.4 The absorbed-dose range of the dosimetry system used for mapping the dose distribution may not be suitable for measuring the transit dose. Thus, it may be necessary to utilize a different dosimetry system for measuring the transit dose.

9.3.4 *Timer Setting Calculation*—An important calculation in the use of gamma-ray sources is the correction for radioactive decay. For a pure radionuclide source, the reduction in

activity with time is exponential. For an initial activity of A_0 (at time = 0 which is usually specified as the date of the last reference dose-rate measurement), the activity at some later time, t , is given by:

$$A_t = A_0 \cdot e^{-\lambda t} \quad (1)$$

where A_t is the source activity at time t , and the decay constant, λ , for a given radionuclide, is defined as:

$$\lambda = \frac{\ln(2)}{t_{1/2}} \quad (2)$$

where:

$t_{1/2}$ is the half-life for a given radionuclide. The half-lives used in these examples for gamma-ray emission by ^{60}Co and ^{137}Cs are 1925.20 (± 0.25) days and 11018.3 (± 9.5) days, respectively (see 6.3). The values for λ in Eq 2 for ^{60}Co and ^{137}Cs are as follows:

$$\text{For } ^{60}\text{Co}, \lambda = 3.60076 \times 10^{-4} \text{ day}^{-1} \quad (3)$$

$$\text{For } ^{137}\text{Cs}, \lambda = 6.29087 \times 10^{-5} \text{ day}^{-1} \quad (4)$$

where no round-off occurs until the final answer. The decay factor is defined as follows:

$$\text{Decay Factor} = \frac{A_t}{A_0} = e^{-\lambda t} \quad (5)$$

NOTE 6—Examples of using these equations to obtain decay factors are given as follows: for an elapsed time period of 500 days and using the decay constants according to Eq 3 and Eq 4, Eq 5 gives decay factors for ^{60}Co and ^{137}Cs of 0.835238 and 0.969035, respectively. The decay factor can be used to correct a known dose rate or source activity for time. Refer to <http://physics.nist.gov/Halflife> for up-to-date radionuclide half lives.

Since the absorbed-dose rate due to a radionuclide source also varies exponentially with the decay time, t , the dose rate, dR , is given by:

$$DR_t = DR_0 \cdot e^{-\lambda t} \quad (6)$$

where: DR_t is the dose rate at time t ; DR_0 is the dose rate at some earlier time ($t = 0$). The timer setting, TS , necessary to deliver the targeted central dose varies inversely with the dose rate or source activity, and is given by:

$$(TS)_t = (TS)_0 \cdot e^{-\lambda t} \quad (7)$$

where: $(TS)_t$ is the timer setting necessary to deliver the required target dose, for example, D_{min} , at a time t ; $(TS)_0$ is the timer setting at some earlier time, $t = 0$, to deliver the same target dose. Typically for free-standing irradiators with a ^{137}Cs radionuclide source, the timer setting is adjusted (increased) by ~1.1 % every six months. Typically, for free-standing irradiators with a ^{60}Co radionuclide source, the timer setting is adjusted (increased) by ~1.1 % every month.

NOTE 7—Calculations of source decay, and therefore adjustments of timers, always should be done as referenced to the date of last dose-rate measurement ($t = 0$), to avoid compounding error.

9.3.4.1 Although the output of gamma-ray sources is expected to be constant (except for radioactive decay), errors may be introduced by the existence of radioactive impurities. For example, ^{134}Cs may be an impurity in ^{137}Cs sources. This could lead to an error in the manufacturer's measurement of source

activity. In addition, the dose measurements cannot differentiate the dose contributions from ^{134}Cs and ^{137}Cs . Although the original dosimetry measurements take this into account, ^{134}Cs and ^{137}Cs decay at different rates, which may lead to an error in the timer setting calculations. If the contribution to the central dose rate from the radioimpurity is greater than 1 %, the irradiator manufacturer should provide a timer setting methodology to accurately account for source decay. Periodic re-measurement of the central dose rate using a reference-standard dosimetry system may help to minimize the uncertainty introduced by the presence of radio-impurities.

10. Performance qualification (PQ)

10.1 *Objective*—For irradiators to be used for routine processing, performance qualification (PQ) dosimetry shall be performed to ensure that all products processed within specified parameters receive the required absorbed dose.

10.1.1 Minimum and maximum absorbed-dose limits are often associated with the irradiation application. In addition, for many applications, one or both of these limits may be prescribed by government regulations. Dosimetry is used in performance qualification (PQ) to determine the appropriate process parameters (including timer setting and product loading configuration) to help ensure that the absorbed-dose requirements for a particular product can be satisfied. This is accomplished by absorbed-dose mapping of specific product. The purpose of the mapping is to determine the magnitudes and locations of the minimum and maximum absorbed doses and their relationships to the absorbed doses at locations used for monitoring during routine product processing.

10.2 *Product Loading Configuration*—A loading configuration for the irradiation should be established for each product type. The documentation for this loading configuration shall include specifications for parameters that influence the absorbed-dose distribution. These parameters typically include volume of the product and packaging. The product holder shall not be loaded beyond its designed maximum volume.

10.3 *Product or Simulated Product Absorbed-dose Mapping*—For each type of irradiated product, there is a minimum dose to achieve the desired effect and a maximum dose that the product can tolerate without unacceptable degradation in quality. Both these limits are usually defined by the facility. Establish the locations of the regions of D_{max} and D_{min} for each selected product-loading configuration by placing dosimeter sets throughout the product volume or simulated product. Concentrate the dosimeters in expected regions of D_{max} and D_{min} with fewer dosimeters placed in areas likely to receive intermediate absorbed dose. In many applications, the product is relatively close to the radiation sources, resulting in pronounced absorbed-dose gradients near the periphery of the volume of the sample. It is important, therefore, to choose a dosimeter that is small enough to detect these gradients. Dosimeter film in strips or sheets may be employed to obtain useful information.

NOTE 8—One of the primary design intents for dry-storage gamma irradiators is a highly reproducible dose distribution. As such, it is often straight-forward for the user to demonstrate that one dose mapping is

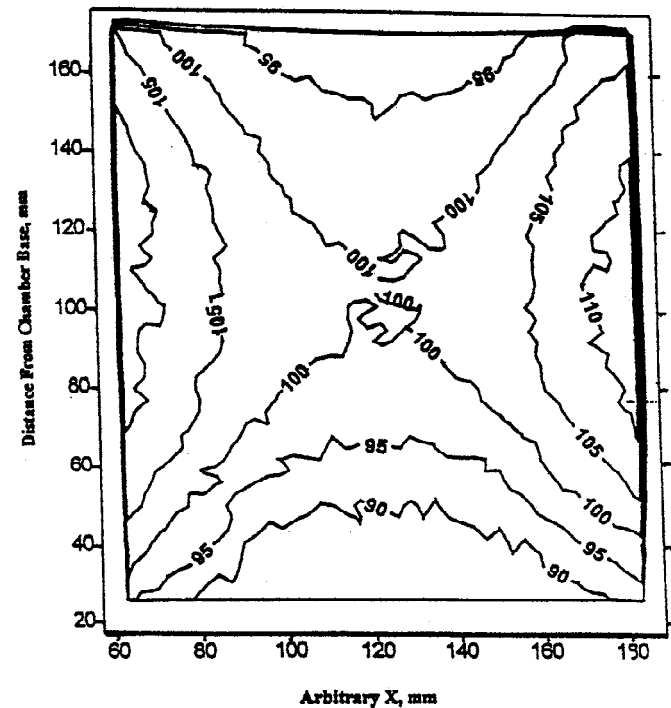


FIG. 1 Example of two-dimensional dose mapping results normalized to a central dose of 100 %

adequate for OQ and PQ and to determine the locations for D_{max} and D_{min} .

10.3.1 Results of absorbed-dose mapping will be used to determine the degree of dose uniformity. In the case when the measured dose uniformity is close to the acceptable dose uniformity, irradiator or processing parameters can be adjusted to improve dose uniformity (for example, installing an irradiator turntable or reducing the product volume to exclude product from areas with low or high dose rates).

10.3.2 If any changes are made to the irradiator or mode of operation that could affect the magnitude or location of the absorbed-dose extremes, repeat the absorbed-dose mapping to the extent necessary to establish the effect. In addition, the established dose rate should be re-verified.

10.3.3 *Reference Position*—Identify a reference position for each loading configuration. This may be, for example, the location of D_{min} or D_{max} , or a location in or on the product holder. The absorbed dose at this location shall have a reproducible and documented relationship to the absorbed dose at the locations of D_{min} and D_{max} .

10.4 *Establishing Process Parameters*—Values of process parameters that yield absorbed dose within specified limits should be established for each product and loading configuration. Value(s) of all parameters that affect absorbed dose are established based on results of the absorbed-dose mapping in conjunction with results of reference- or transfer-standard measurements of absorbed-dose rate at a reference position. For most irradiation facilities, the absorbed dose is controlled by adjusting a single process parameter such as timer setting. The value that is established for that parameter shall result in an absorbed-dose distribution that is within specified limits throughout the product.



11. Routine sample processing

11.1 *Process Parameters and Control*—For sample batch processing, set the process parameters as established during performance qualification, taking into account source decay. All critical process parameters that can affect the absorbed-dose distribution should be controlled and monitored during routine processing. These parameters include sample geometry and timer setting. Control, monitor and document the process parameters to help ensure that the product is processed in accordance with specifications. If these parameters deviate from prescribed processing limits, take appropriate actions.

11.2 *Routine Monitoring of the Radiation Process*—Routine measurements of absorbed dose to the product at the reference position will help ensure that the product has been treated within the dose limits prescribed by the process. Radiation-sensitive indicators may be used to monitor the radiation process (see ISO/ASTM Guide 51539). In order to detect any anomalies during the course of the irradiation, more than one reference position may be necessary.

11.2.1 *Process Monitoring Using Dosimeters*—Routine process monitoring may be performed using routine dosimetry. Routine dosimetry can be part of the verification process for establishing that the irradiation process is under control.

11.2.1.1 *Dosimeter Location(s)*—When used, place one or more dosimeters on the product at predetermined locations of the D_{max} and D_{min} or at a reference dose position. Under predefined conditions of operation, the absorbed dose at the reference-dose position has a quantitative and reproducible relationship with D_{max} and D_{min} .

11.2.1.2 *Dosimeter Placement Frequency*—Placement frequency should always be done according to the measurement management system. Irradiation using a self-contained dry-storage gamma-ray irradiator has the inherent advantage that for a defined product geometry, the only process parameter is often the timer setting. The relative dose distribution is not expected to change from irradiation to irradiation.

11.3 *Environmental Effects*—If there is a change in the environment (for example, temperature, humidity) of a dosimeter or radiation-sensitive indicator during the irradiation process or pre- or post-irradiation storage, the response of the dosimeter and indicator may be affected. If this occurs, correct the dosimeter response for any such effect. A radiation-sensitive indicator's response cannot be corrected for such conditions, and therefore, care should be taken when using the indicators in those conditions. Care must also be taken in handling and storage of dosimeters and indicators before and after irradiation (see ISO/ASTM Guides 51261 and ASTM E2701).

11.4 *Chilled or Frozen Product*—Absorbed dose is not a function of the product temperature. The response of the dosimeter and radiation-sensitive indicator, however, may be a

function of temperature. The dose-mapping information for simulated product (representing the actual product geometry) at ambient temperature can be applied to the chilled or frozen product. Determine the temperature of the dosimeter during irradiation of product and apply the appropriate temperature correction. Dosimeters and radiation-sensitive indicators that exhibit a highly temperature-dependent response should not be placed in locations with large temperature gradients. (See ISO/ASTM Practice 51261 and ASTM E2701.)

11.5 *Partially Loaded Product Holders*—Irradiations may be performed using less product than that used for the initial dose mapping. For partially loaded holders, the D_{max} received by the product may be greater than the D_{max} measured in the product. Care must be taken, therefore, to ensure that the D_{max} allowed for the process is not exceeded during routine use. Changes to the absorbed-dose distribution arising from partially loaded product holders may be minimized by the use of simulated product placed at the appropriate locations in the irradiation volume, and by center-loading the product.

11.6 *Radiation-Sensitive Indicators*—In some applications, radiation-sensitive indicators (sometimes known as “go/no go” indicators) may be used to show that product has been exposed to a radiation source. However, these indicators provide only a qualitative indication of radiation exposure. In addition, the color change of radiation-sensitive indicators is not always stable and may be affected by, for example, light or heat. Thus, their use is neither a substitute for nor a complement to dosimetry. Also, while radiation-sensitive indicators can conveniently be used to assist in production inventory control, they shall not be used to replace other administrative inventory control procedures.

12. Measurement uncertainty

12.1 All dose measurements need to be accompanied by an estimate of uncertainty. Appropriate procedures are recommended in ISO/ASTM Guides 51707 and 51261 (see also GUM).

12.1.1 All components of uncertainty should be included in the estimate, including those arising from calibration, dosimeter variability, instrument reproducibility, and the effect of influence quantities. A full quantitative analysis of components of uncertainty is referred to as an uncertainty budget, and is then often presented in the form of a table. Typically, the uncertainty budget will identify all significant components of uncertainty, together with their methods of estimation, statistical distributions and magnitudes.

13. Keywords

13.1 caesium-137; cesium-137; cobalt-60; dosimetry; dry-storage irradiator; gamma cell; gamma radiation; self-contained irradiator

ANNEXES

(informative)

A1. TYPICAL SELF-CONTAINED DRY-STORAGE IRRADIATORS

A1.1 Typical self-contained dry-storage irradiators (see ANSI/HPS N43.7) include the GammaCell 220, the JL Shepherd Mark I (see A1.3), the Husman Model 521A and the Gamma Chamber 5000.

A1.1.1 The BRIT Gamma Chamber 5000 is compact self-shielded cobalt-60 gamma irradiator providing an irradiation volume of approximately 5 L. The product is placed in an irradiation chamber located in the vertical drawer which moves into the radiation field. The chamber can be temperature controlled via the use of access ports.

A1.1.2 The JL Shepherd Mark I irradiator (Fig. A1.1) contains ¹³⁷Cs sources. After the sample is loaded into the sample cavity and the door is closed securely, the radiation source moves into the irradiation position for a predetermined period of time.

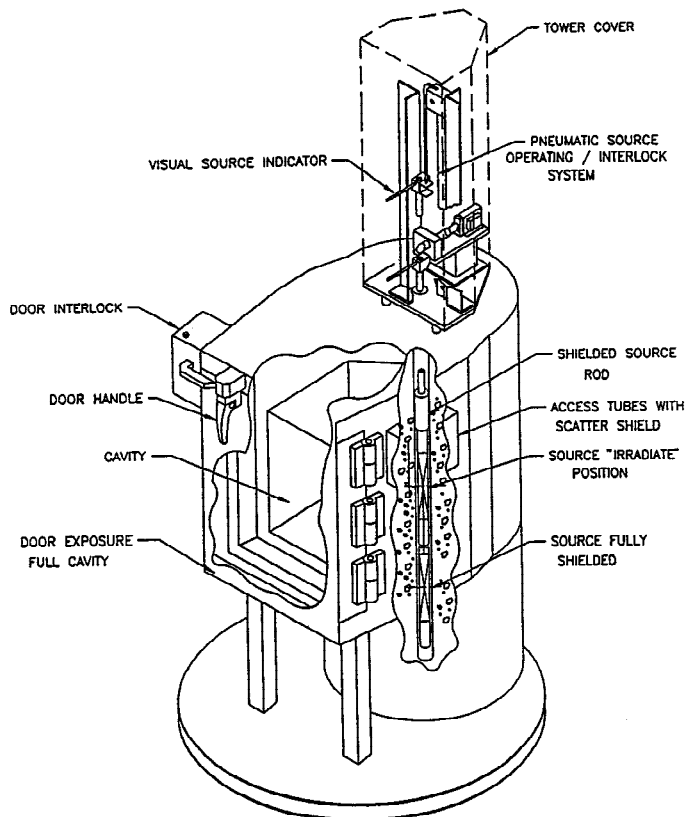


FIG. A1.1 Basic construction of J.L. Shepherd Mark I irradiator

A1.1.3 The Best Theratronics GC40, GC1000 and GC3000 irradiators contain shielded ¹³⁷Cs sources. For the GC1000/3000 irradiators, the sample is loaded into a holder and placed on the turntable within the sample cavity. The door is closed securely, the sample cavity rotates 180° into the irradiate position for a predetermined period of time. For the GC40 irradiator, the sample is loaded into the sample cavity. The door is closed securely and the radiation source moves into the irradiate position for a predetermined period of time.

A1.1.4 The Husman 521A irradiator contains sealed ¹³⁷Cs source sources in an annular array around the irradiation chamber (Fig. A1.2).

A1.1.5 The GammaCell Model 220 irradiator contains sealed ⁶⁰Co sources in an annular array around the irradiation chamber (Fig. A1.3).

A1.2 These irradiation devices house the gamma-ray source(s) in a protective shield, or other appropriate high atomic-number material, and usually have a sample positioning mechanism interlocked with a calibrated timer. After securing the door, either the product moves into the radiation field or the radiation source(s) moves into the irradiation position. For details on the operations and precautions in the use of these irradiators, see the appropriate manufacturers' instruction manuals as well as the references cited.

A1.3 Manufacturers of self-contained dry-storage irradiators include:

Irradiator Model	Contact
Gamma Chamber 1200	Board of Radiation and Isotope Technology (BRIT)
Gamma Chamber 5000	V.N. Purav Marg, Mumbai 400 094, India
Blood Irradiator BI-2000	www.britatom.gov.in
JL Shepherd Mark I	J.L. Shepherd & Associates 1010 Arroyo Avenue San Fernando, CA 91340-1822 USA www.jlshepherd.com
GC40, GC1000, GC3000	Best Theratronics (part of Best Medical, Inc.) 413 March Rd., Ottawa, Ontario K2K 0E4 Canada www.theratronics.ca
Husman 521A	This unit is no longer being manufactured but is still in use.
GammaCell 220	This unit is no longer being manufactured but is still in use.

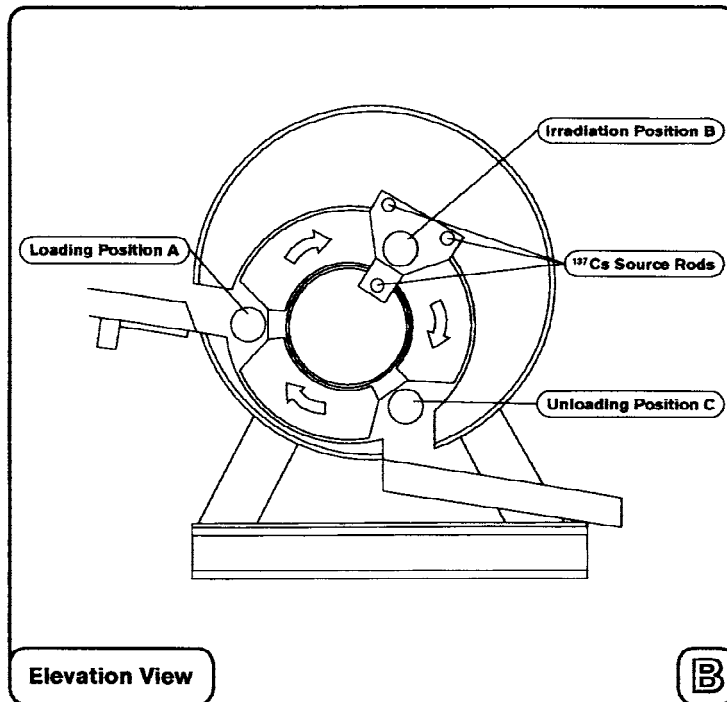
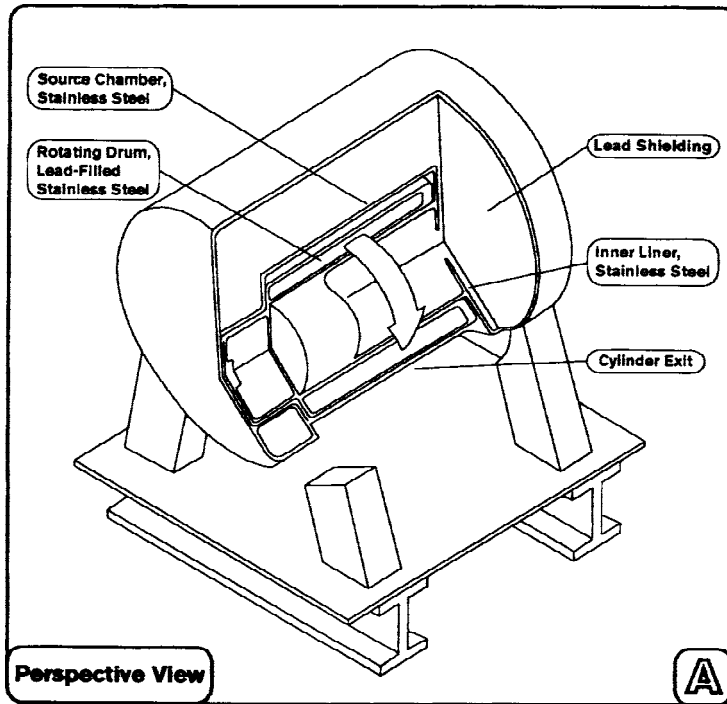


FIG. A1.2 Basic construction of the Husman ¹³⁷Cs irradiator

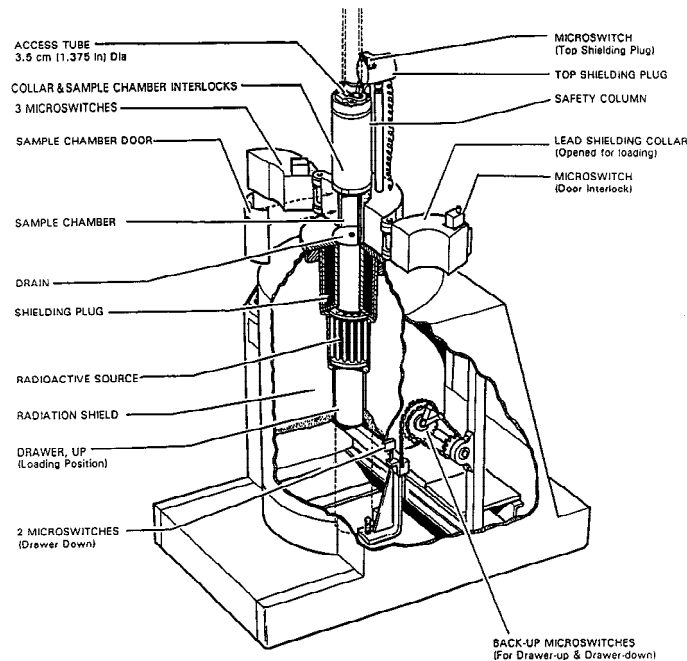


FIG. A1.3 Basic construction of the GammaCell 220 ^{60}Co irradiator

A2. PROCEDURES FOR TESTING OF SELF-CONTAINED DRY-STORAGE IRRADIATORS

A3. DETERMINATION OF TRANSIT DOSE

A3.1 Two methods for the determination of transit dose are as follows:

A3.1.1 In the first method, select a series of incremental irradiation times that start as close to zero as is possible with the dosimetry system employed. It may be necessary to utilize a dosimetry system with a higher sensitivity (lower dose capability such as Alanine or Fricke) than the system normally employed for routine use. Use at least five different irradiation times. Analyze the results using linear regression analysis. A graph of the results should look similar to Fig. A3.1. Note that the intercept with the Y axis gives the value of the transit dose.

A3.1.2 In the second method, select a high sensitivity dosimeter such as the Fricke. Set the irradiator timer at zero and perform ten irradiation cycles. The dosimeter receives ten times the transit dose; hence divide the total dose by ten to

obtain the transit dose. Repeat this process three times, and calculate the average of the three measurements to obtain the transit dose.

A3.2 To calculate a corrected timer setting for future irradiations, first convert the transit dose into an equivalent irradiation time (transit time, t_t); that is, divide the transit dose by the current dose rate (\dot{D}). Subsequent timer settings can be calculated using the formula:

$$t = \frac{D_T}{\dot{D}} - t_t \quad (\text{A3.1})$$

where:

DT = the target dose, and
 t = the timer setting required to achieve that dose.

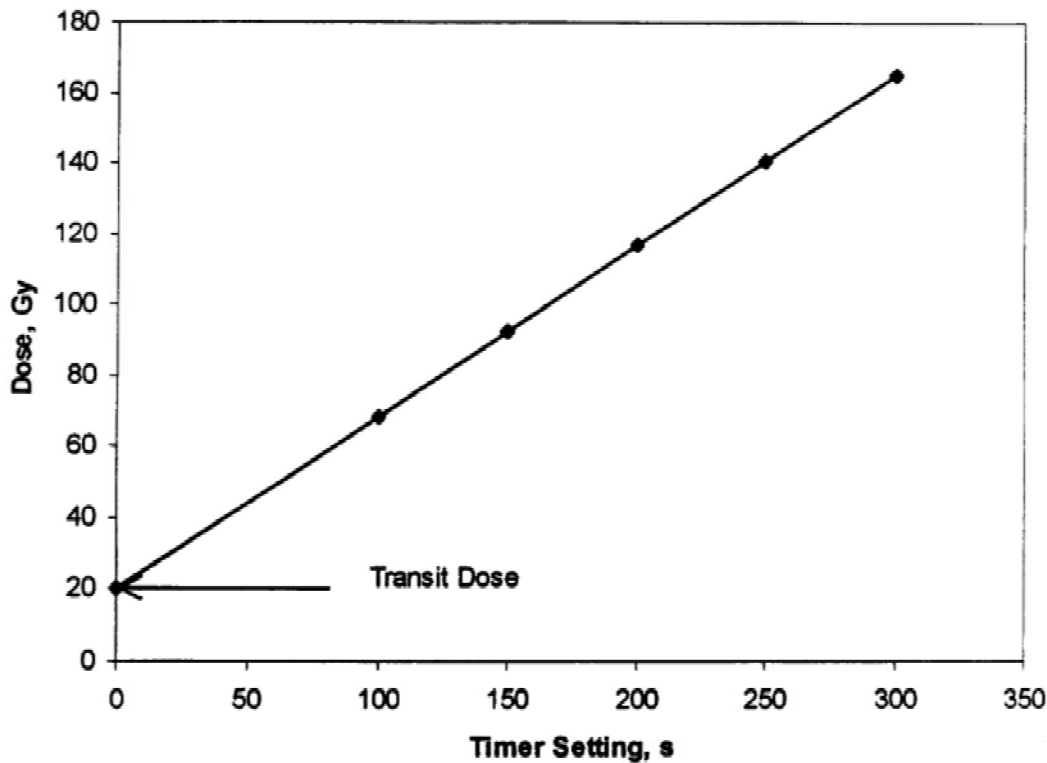


FIG. A3.1 Transit dose determination

TABLE A2.1 Procedures for testing of self-contained dry-storage irradiators

Procedure	Frequency ^A	Relevant Section
<i>Release-for-Shipment Criteria</i>		
Performed by manufacturer before shipment of the irradiator according to a documented quality assurance program (including mechanical and software testing, absorbed-dose mapping, reference-standard dosimeter measurement)	Performed before shipment of the irradiator from manufacturer to customer	Section 8
<i>Installation Qualification</i>		
Mechanical and software testing	Performed after irradiator installation by manufacturer and facility	Section 8
Establish and maintain facility documentation	Ongoing	
Check timer calibration and accuracy		
Check position of holder, if applicable		
Check rotation of holder, if applicable		
<i>Operational Qualification</i>		
Absorbed-dose-rate measurement at a reference position		Section 9
Absorbed-dose mapping of holder filled with simulated product		
Calibrate routine dosimetry system	Upon installation and following any modification	
Standard Process Procedures governing loading configuration, Use of routing dosimetry systems		
<i>Performance Qualification</i>		
Define a loading configuration for each sample type (for example, orientation of sample, maximum number of units to be irradiated at one time)		Section 10
Absorbed-dose mapping with product (or equivalent material) using specific product loading configurations	Before routine processing begins. Reviewed at regular intervals	
Establish operating parameters to achieve specified dose range		
Dose rate verification using transfer-standard dosimeters		
<i>Routine Sample Processing</i>		
Check timer setting, timer accuracy, turntable rotation, and other processing parameters as applicable	As per the measurement management program	Section 11
Use of radiation-sensitive indicators	Per program protocol	
Check holder position and rotation, if applicable	Before and after each irradiation	

^AThe frequency of testing depends on the manufacturer's recommendations and user requirements.



ASTM International takes no position respecting the validity of any patent rights asserted in connection with any item mentioned in this standard. Users of this standard are expressly advised that determination of the validity of any such patent rights, and the risk of infringement of such rights, are entirely their own responsibility.

This standard is subject to revision at any time by the responsible technical committee and must be reviewed every five years and if not revised, either reapproved or withdrawn. Your comments are invited either for revision of this standard or for additional standards and should be addressed to ASTM International Headquarters. Your comments will receive careful consideration at a meeting of the responsible technical committee, which you may attend. If you feel that your comments have not received a fair hearing you should make your views known to the ASTM Committee on Standards, at the address shown below.

This standard is copyrighted by ISO, Case postale 56, CH-1211, Geneva 20, Switzerland, and ASTM International, 100 Barr Harbor Drive, PO Box C700, West Conshohocken, PA 19428-2959, United States. Individual reprints (single or multiple copies) of this standard may be obtained by contacting ASTM at the above address or at 610-832-9585 (phone), 610-832-9555 (fax), or service@astm.org (e-mail); or through the ASTM website (www.astm.org). Permission rights to photocopy the standard may also be secured from the ASTM website (www.astm.org/COPYRIGHT/).

ICS 17.240

Price based on 11 pages