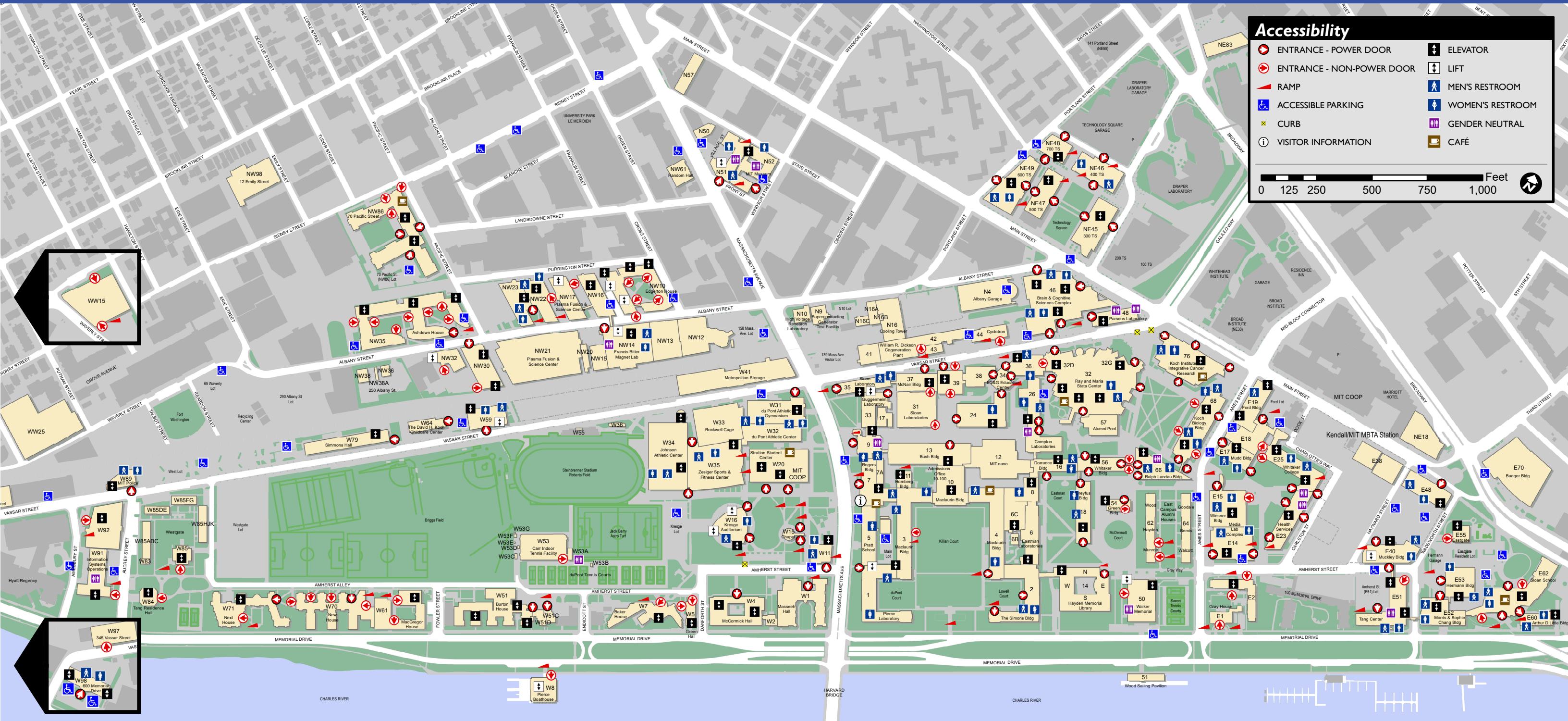


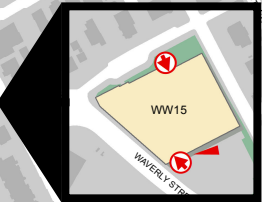
MIT CAMPUS ACCESSIBILITY MAP



Accessibility

ENTRANCE - POWER DOOR	ELEVATOR
ENTRANCE - NON-POWER DOOR	LIFT
RAMP	MEN'S RESTROOM
ACCESSIBLE PARKING	WOMEN'S RESTROOM
CURB	GENDER NEUTRAL
VISITOR INFORMATION	CAFÉ

0 125 250 500 750 1,000 Feet



Access to MIT
This guide presents the major means of physical access to MIT facilities, as well as the architectural barriers which may be encountered. Although this guide deals with the general needs of people with temporary or permanent mobility impairments, MIT is prepared to respond to other access requests.

Architectural Barriers
If you encounter any barriers or have any requirements or recommendations relating to the physical environment, contact:
MIT Facilities | NW23-100 | 617-253-4948
HR Disabilities Services Office | NE49-5000 | 617-253-4572
Disabilities Services for Students | 5-104 | 617-253-1674

Parking
Parking at MIT is by permit only. Designated accessible parking also requires an HP plate. If you do not have an HP Plate and special parking arrangements are required, you may contact:
MIT Parking & Transportation Office | E17-106 | 617-258-6510
MIT Medical Occupational Health | E23-171 | 617-253-8552

Snow Removal
If additional snow removal is needed contact:
Grounds Services | NW38 | 617-253-5718

Department of Athletics, Physical Education and Recreation (DAPER)
W34/W35 Main Customer Service Desk | 617-253-4498

Housing
617-253-2811












Inaccessible Buildings
Random Hall, NW61 | Sailing Pavilion, 51

Visitor Information (M-F, 9AM - 5PM)
For copies of this map or more information about MIT, please visit the MIT Information Center, Room 7-121, located in the main entrance lobby (Lobby 7) | 617-253-4795

MAIN GROUP ACCESSIBILITY

Many of the **MAIN GROUP** and **NORTH GROUP** buildings are interconnected to allow access between buildings. The maps on this page depict these connections for floors basement through five. Please note that floors in the **MAIN GROUP** are numbered one floor lower than **NORTH GROUP** floors at the same level.

LEGEND

-  ENTRANCE - POWER DOOR
 -  ENTRANCE - NON-POWER DOOR
 -  RAMP
 -  ACCESSIBLE PARKING
 -  VENDING/CAFÉ
 -  VISITOR INFORMATION
 -  ELEVATOR
 -  LIFT
 -  WOMEN'S RESTROOM
 -  MEN'S RESTROOM
 -  GENDER NEUTRAL
- ACCESSIBLE ROUTES THROUGH BUILDINGS
 - - - ACCESSIBLE ROUTES THROUGH TUNNELS

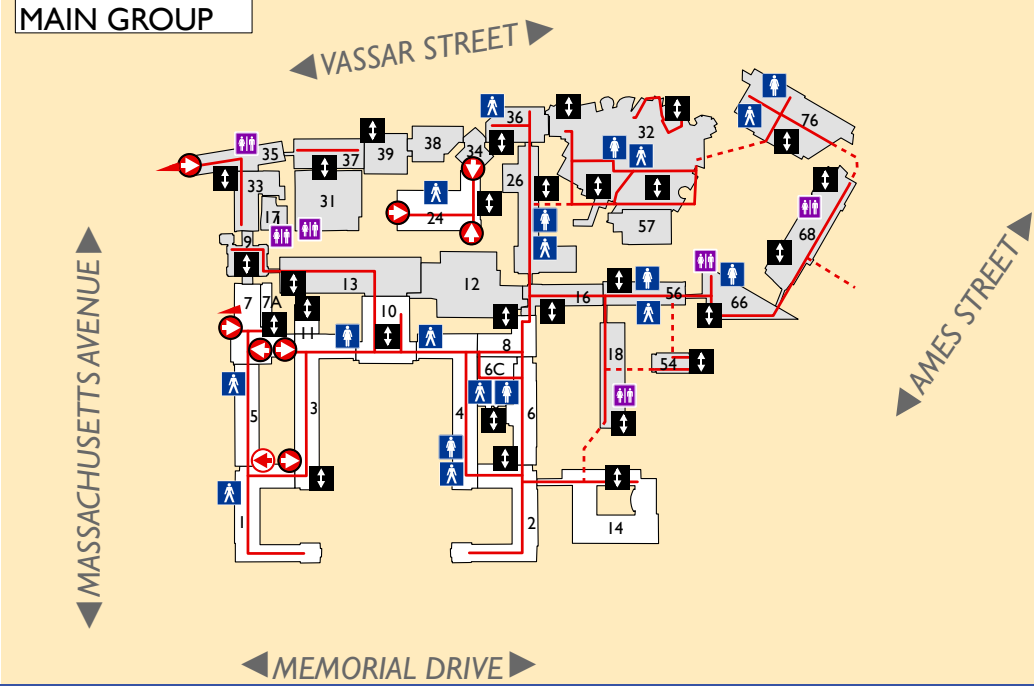


MIT CAMPUS ACCESSIBILITY MAP

BASEMENT

NORTH GROUP

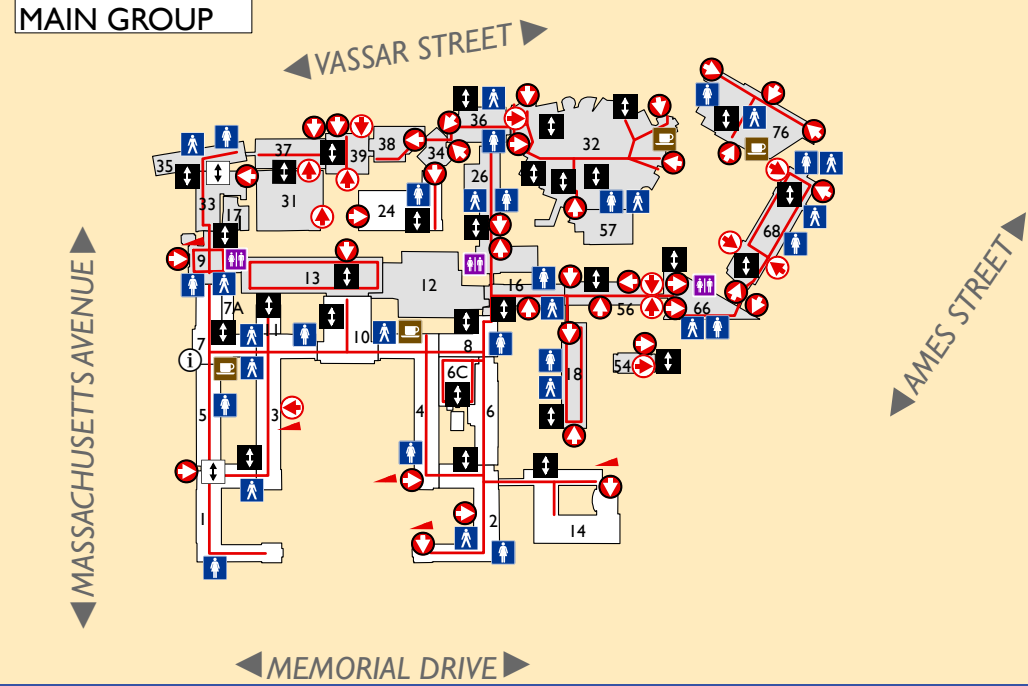
MAIN GROUP



FLOOR 1

NORTH GROUP

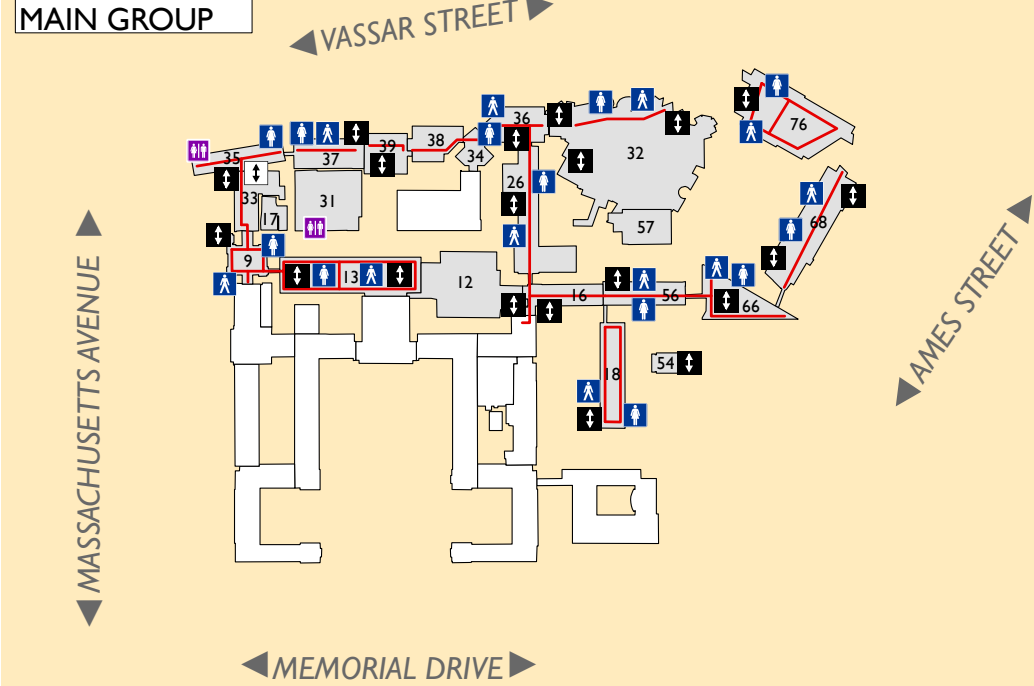
MAIN GROUP



FLOOR 2

NORTH GROUP

MAIN GROUP

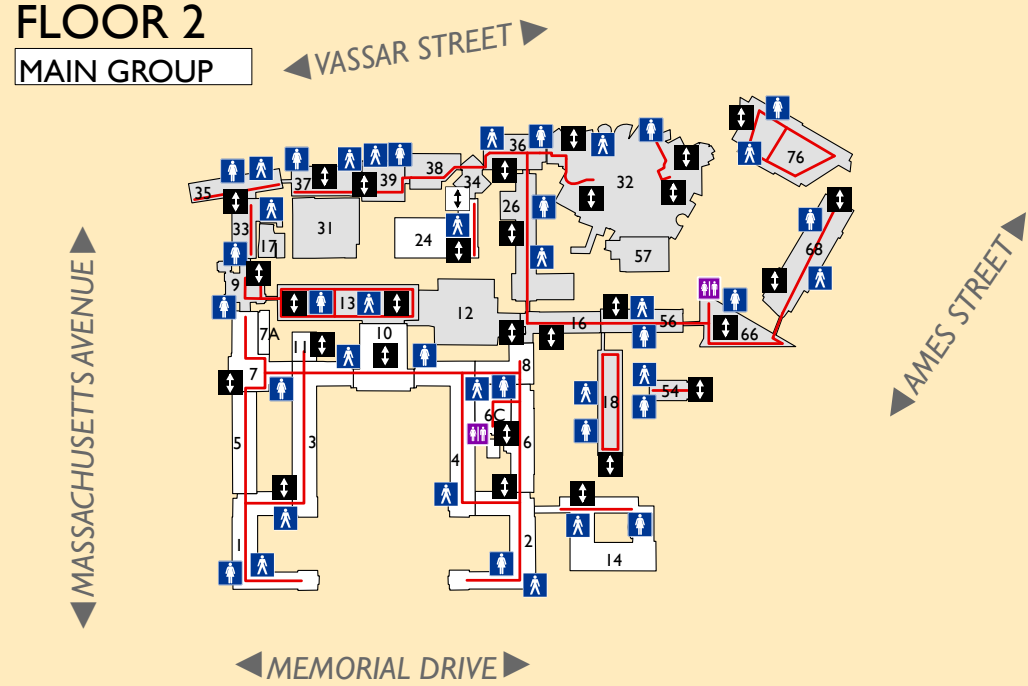


FLOOR 3

NORTH GROUP

FLOOR 2

MAIN GROUP

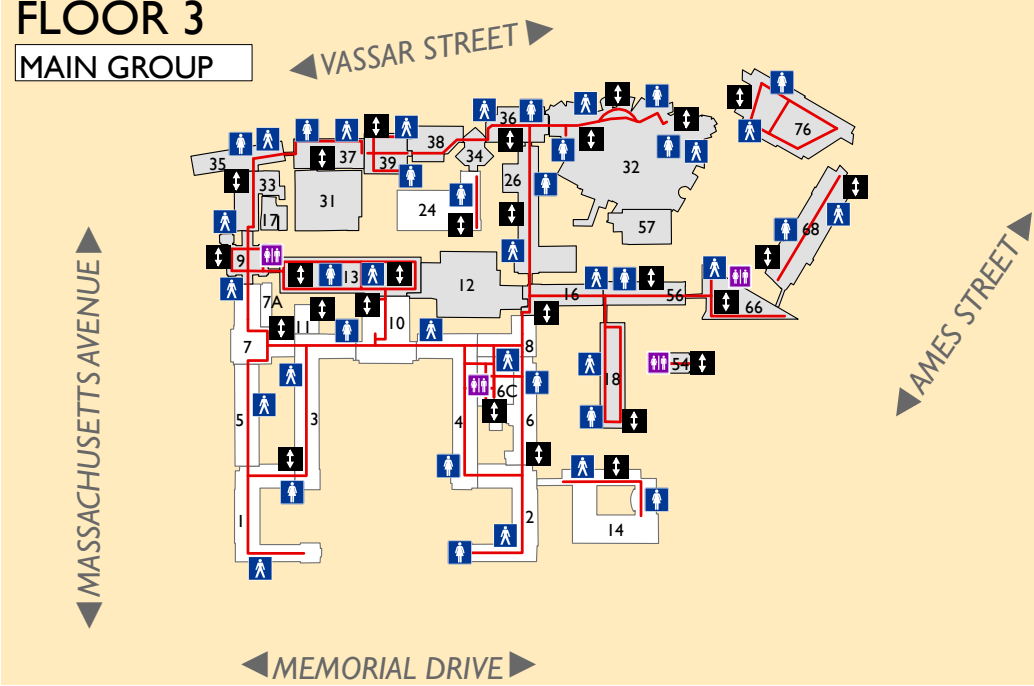


FLOOR 4

NORTH GROUP

FLOOR 3

MAIN GROUP



FLOOR 5

NORTH GROUP

FLOOR 4

MAIN GROUP

