



# Staff on Loan Opportunities at the NEA

# The NEA welcomes Staff on Loan from across the globe

## Who are Staff on Loan?

- Staff on loan are professionals assigned and “lent” by public or private organisations to work at NEA Headquarters on specific projects for a fixed term (from six months up to two years, and renewable for up to three years) in order to contribute to fulfilling the agency’s objectives.
- During the loan period, each Staff on Loan remains employed by his or her current employer, but are fully integrated as NEA Staff, participating in official meetings, mission travel and interacting with international experts in the global nuclear community.

## Benefits

The NEA fosters a workplace of mutual trust, respect, and collaboration. Staff on loan will have a unique opportunity to exchange, learn, and grow professionally as a member of the NEA network of international nuclear experts.

## Areas of work

Staff on Loan currently have the opportunity to work in the following areas:

- Nuclear safety and regulation
- Nuclear energy technology
- Radioactive waste management
- Radiological protection and public health
- Nuclear law and liability
- Nuclear safety culture
- Medical isotopes

**“It’s a unique experience for me to work in the NEA. I believe this will definitely become a turning point in my life when I look back on my career after 30 years.”**

Staff on loan, working in the Division of Radioactive Waste Management and Decommissioning, 2019.



**“Employment at the Nuclear Energy Agency provides great experience and opportunities for consequential career growth for nuclear professionals in international and governmental organisations.”**

Staff on loan working in the Division of Radiological Protection and Human Aspects of Nuclear Safety, 2019.

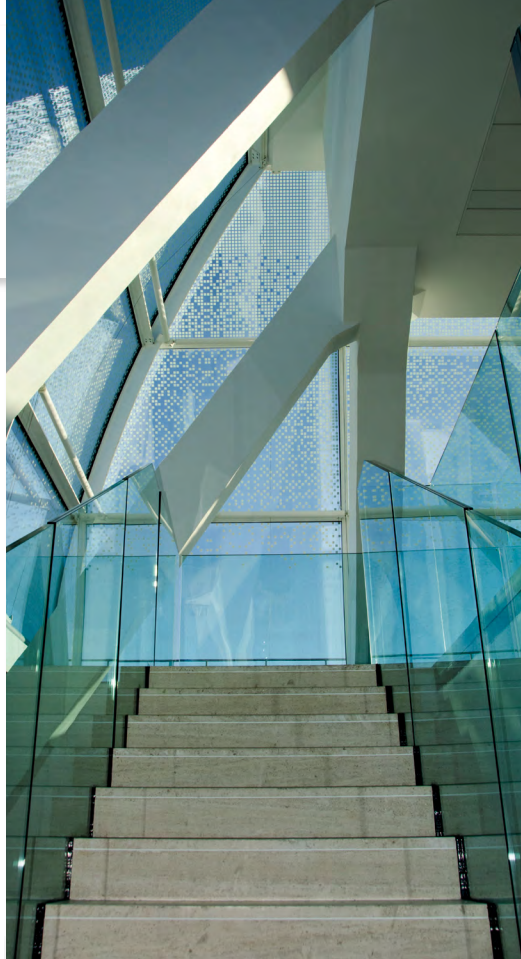
## Skills and development

NEA Staff on Loan participate in:

- Assisting policy makers in developing and improve policies to reflect state-of-the-art science and technology;
- Identifying emerging issues in human and organisational factors, and facilitating the application of new scientific knowledge;
- Ensuring high standards of safety in the use of nuclear energy;
- Developing safe, sustainable and societally acceptable strategies for the management of all types of radioactive waste;
- Implementing the system of radiological protection;
- Reviewing the role of nuclear power in the broader perspective of climate change and sustainable development;
- Helping countries identify, collate, develop and disseminate basic scientific and technical knowledge;
- Assisting countries in developing, strengthening and harmonising nuclear legislation.

## Procedures for becoming a Staff on Loan

A Memorandum of Agreement is signed between the NEA, the Sending Institution and the individual. The agreement details the conditions of the assignment as well as the activities in which the individual will be involved.



**“Since working at the NEA, I have changed my way of thinking from micro to macro. Before, I couldn’t really see how the technologies and findings that my research institution developed were applied in the real world, but now I see things from a totally opposite point of view.”**

Staff on loan working in the NEA Communications team, 2019.

## About the NEA

Headquartered just outside Paris, France, the Nuclear Energy Agency (NEA) is an intergovernmental agency which provides advanced thinking on nuclear energy. Its 33 member countries from the Americas, Europe and the Asia-Pacific region seek excellence in nuclear safety, technology, and policy. The NEA membership has 82% of the world's currently installed nuclear capacity.

The Agency operates under the framework of the Organisation for Economic Co-operation and Development (OECD) and has as its objective to assist its member countries in maintaining and further developing, through international co-operation, the scientific, technological and legal bases required for a safe, environmentally sound and economical use of nuclear energy for peaceful purposes. It strives to provide authoritative assessments and to forge common understandings on key issues as input to government decisions on nuclear energy policy and to broader OECD analyses in areas such as energy and the sustainable development of low-carbon economies.

## NEA member countries



Argentina



Australia



Austria



Belgium



Canada



Czech Republic



Denmark



Finland



France



Germany



Greece



Hungary



Iceland



Ireland



Italy



Japan



Korea



Luxembourg



Mexico



Netherlands



Norway



Poland



Portugal



Romania



Russia



Slovak Republic



Slovenia



Spain



Sweden



Switzerland



Turkey



United Kingdom



United States

## For further information on staff on loan

See our website at [www.oecd-nea.org/general/jobs](http://www.oecd-nea.org/general/jobs)

Contact: Lydie Guyot, Human Resources and Administration Manager

[Lydie.guyot@oecd-nea.org](mailto:Lydie.guyot@oecd-nea.org)