

zone2source

Sunday, December 13 – 14 February '15/16

EXHIBITION
Glazen Huis, Amstelpark

ENTROPICAL

Debra Solomon
(Urbaniahoeve)
& Jaromil Rojo
(Dyne.org)

Sunday, December 13, 2015 • 2 – 4 pm
OPENING & PRESENTATION
Glazen Huis, Amstelpark

ENTROPICAL
Debra Solomon and Jaromil Rojo discuss the background of digital mining and the possibilities and contradictions of connecting digital/technological value creation with the practice of ecological regeneration and urban agriculture.

A
M
S
T
E
R
D
A
M
P
A
R
K

art
nature
technology
P A V I L I O N S

het Glazen Huis

exhibitions & presentations

Orangerie

occupied by plants till May 15th 2016

Rietveld Huis

archive & office

Amstelpark 4, 1083 HZ Amsterdam
open from Friday till Sunday 1 – 4 pm
info@zone2source.net

www.zone2source.net

Sunday, December 13 – February 14, 2015/16

EXHIBITION
Glazen Huis, Amstelpark

ENTROPICAL Debra Solomon (Urbaniahoeve)
& Jaromil Rojo (Dyne.org)

Entropical is a research project started in 2015, the international year of the soil. This first presentation of *Entropical* consists of four art works in which the value and dynamics of the exchange of materials in the biological world is set against the abstract value of algorithms and computer calculations. How can we bring these value systems into a direct productive relationship in a time in which intensive computation is valued far more than ecological regeneration? How, for example, can Bitcoin positively affect the rhizosphere, the layer of earth around the roots of plants?



Debra Solomon, *Entropical / En Necromasse*, forest root, 2015

One of the exhibition works comprises a two-part installation built up from mycelium and silicium. A network of fungal threads is grown in the installation itself. The heat necessary to produce the mycelium comes from a computer processing block chains, the technology behind the mining of cryptographic currencies such as Bitcoin. The protein-rich mycelium mats that form during the exhibition will later be used to inoculate poor urban soils with fungi to initiate a robust ecosystem. In the front space of the Glazen Huis, typographic works and silk screens connect natural processes with network architecture.

Entropical plays with the concept of 'entropy', the second law of thermodynamics, a condition of constant change in which materials and energy are transformed. But the term is also used in cryptography, where it refers to algorithmic processes and abstract information. *Entropical* inquires into the incentive to produce ecological regeneration in an age in which running intensive computation (e.g. 'mining Bitcoin') yields far more value than soil production and ecological regeneration.

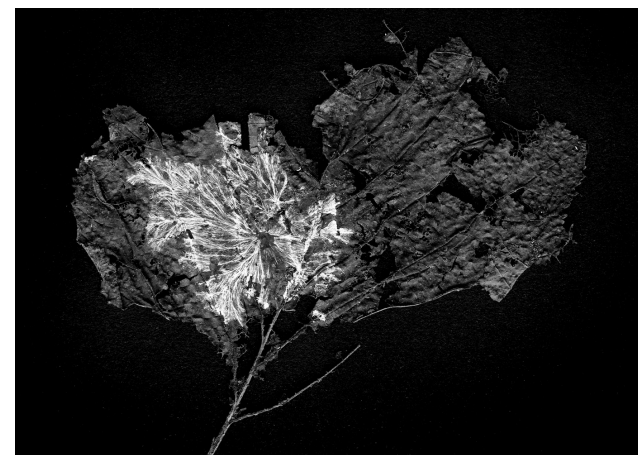
www.entropical.org
www.urbaniahoeve.nl
www.dyne.org



Debra Solomon, *Entropical / En Necromasse*, leaf skeleton, 2015



Debra Solomon, *Entropical / En Necromasse*, spore print, 2015



Debra Solomon, *Entropical / En Necromasse*, mycelium, 2015

P A V I L I O N S
t e c h n o l o g y
n a t u r e
a r t

PUBLIC ACTIVITIES

Friday, December 11, 2015 • 2 – 5 pm
Sunday, February 7, 2016 • 2 – 5 pm
Glazen Huis, Amstelpark

TEMPEH WORKSHOP

Under the guidance of Debra Solomon participants will produce their own block of edible tempeh that will ripen in two days within the *Entropical* installation. The tempeh blocks can be picked up during the opening on December 13 or the finissage on February 14. Register for the workshop via entropical@urbaniahoeve.nl with subject Tempeh Workshop before December 4 or January 29. See www.entropical.org for more information.

Sunday, February 14, 2016 • 2 – 5 pm
Glazen Huis, Amstelpark

FINISSAGE & DEBATE

VALUES AND YIELDS *on ecosystems and financial exchange.*

Discussion with Debra Solomon, Jaromil Rojo, Kunst Reserve Bank, Josephine Bosma, and others. After the debate there will be a festive urban-agrarian ritual. The mycelial mats cum art object substrate produced during the exhibition will be distributed to Amsterdam urban farmers who will install them at their sites in order to improve soil fertility.

Amstelpark 4, 1083 HZ Amsterdam
open from Friday till Sunday 1 – 4 pm
info@zone2source.net

zone2source

is kindly supported by:

X Gemeente
X Amsterdam
X Zuid

amsterdams
fonds voor de
kunst

Entropical is also supported by:

dyne.org

URBANIA Social Design Lab
for Urban Agriculture
HOFVE

stichting
stokroos